

# User Guide.

**verizon**<sup>v</sup>

ASUS  
Zenfone **AR**

**E12330**

**May 2017  
First Edition**

## **COPYRIGHT INFORMATION**

No part of this manual, including the products and software described in it, may be reproduced, transmitted, transcribed, stored in a retrieval system, or translated into any language in any form or by any means, except documentation kept by the purchaser for backup purposes, without the express written permission of ASUSTeK COMPUTER INC. ("ASUS").

ASUS PROVIDES THIS MANUAL "AS IS" WITHOUT WARRANTY OF ANY KIND, EITHER EXPRESS OR IMPLIED, INCLUDING BUT NOT LIMITED TO THE IMPLIED WARRANTIES OR CONDITIONS OF MERCHANTABILITY OR FITNESS FOR A PARTICULAR PURPOSE. IN NO EVENT SHALL ASUS, ITS DIRECTORS, OFFICERS, EMPLOYEES OR AGENTS BE LIABLE FOR ANY INDIRECT, SPECIAL, INCIDENTAL, OR CONSEQUENTIAL DAMAGES (INCLUDING DAMAGES FOR LOSS OF PROFITS, LOSS OF BUSINESS, LOSS OF USE OR DATA, INTERRUPTION OF BUSINESS AND THE LIKE), EVEN IF ASUS HAS BEEN ADVISED OF THE POSSIBILITY OF SUCH DAMAGES ARISING FROM ANY DEFECT OR ERROR IN THIS MANUAL OR PRODUCT.

Products and corporate names appearing in this manual may or may not be registered trademarks or copyrights of their respective companies, and are used only for identification or explanation and to the owners' benefit, without intent to infringe.

SPECIFICATIONS AND INFORMATION CONTAINED IN THIS MANUAL ARE FURNISHED FOR INFORMATIONAL USE ONLY, AND ARE SUBJECT TO CHANGE AT ANY TIME WITHOUT NOTICE, AND SHOULD NOT BE CONSTRUED AS A COMMITMENT BY ASUS. ASUS ASSUMES NO RESPONSIBILITY OR LIABILITY FOR ANY ERRORS OR INACCURACIES THAT MAY APPEAR IN THIS MANUAL, INCLUDING THE PRODUCTS AND SOFTWARE DESCRIBED IN IT.

Copyright © 2017 ASUSTeK COMPUTER INC. All Rights Reserved.

## **LIMITATION OF LIABILITY**

Circumstances may arise where because of a default on ASUS' part or other liability, you are entitled to recover damages from ASUS. In each such instance, regardless of the basis on which you are entitled to claim damages from ASUS, ASUS is liable for no more than damages for bodily injury (including death) and damage to real property and tangible personal property; or any other actual and direct damages resulted from omission or failure of performing legal duties under this Warranty Statement, up to the listed contract price of each product.

ASUS will only be responsible for or indemnify you for loss, damages or claims based in contract, tort or infringement under this Warranty Statement.

This limit also applies to ASUS' suppliers and its reseller. It is the maximum for which ASUS, its suppliers, and your reseller are collectively responsible.

UNDER NO CIRCUMSTANCES IS ASUS LIABLE FOR ANY OF THE FOLLOWING: (1) THIRD-PARTY CLAIMS AGAINST YOU FOR DAMAGES; (2) LOSS OF, OR DAMAGE TO, YOUR RECORDS OR DATA; OR (3) SPECIAL, INCIDENTAL, OR INDIRECT DAMAGES OR FOR ANY ECONOMIC CONSEQUENTIAL DAMAGES (INCLUDING LOST PROFITS OR SAVINGS), EVEN IF ASUS, ITS SUPPLIERS OR YOUR RESELLER IS INFORMED OF THEIR POSSIBILITY.

## **SERVICE AND SUPPORT**

Visit our multi-language website at: <https://www.asus.com/support/>

# Contents

	Conventions used .....	6
	Care and safety .....	6
<b>1</b>	<b>Get your Zen ready!</b>	
	Parts and features.....	8
	Installing a memory card.....	9
	Removing a memory card.....	10
	Installing a nano SIM card .....	11
	Removing a nano SIM card .....	12
	Charging your ASUS Phone .....	13
	Turning your ASUS Phone on or off.....	16
	Starting for the first time .....	17
	Using the touchscreen.....	18
<b>2</b>	<b>Secure and personalize</b>	
	<b>Securing your ASUS Phone .....</b>	<b>20</b>
	Fingerprint ID sensor.....	20
	Lock Screen.....	24
	<b>Zen Home features .....</b>	<b>28</b>
	Home screen .....	28
	Quick settings .....	30
	System notifications .....	31
	<b>Personalizing your Home screen .....</b>	<b>32</b>
	Widgets .....	32
	Wallpapers .....	33
	Setting up the date and time.....	34
	Setting up your ringtone and alert sounds.....	35
	Clock.....	35
	Weather.....	38
	Voice Search .....	39
	Power Saver .....	40
	<b>Setting your ASUS Phone identity .....</b>	<b>40</b>
	<b>Keeping your device up-to-date.....</b>	<b>41</b>
<b>3</b>	<b>Keeping in touch</b>	
	<b>Managing contacts .....</b>	<b>42</b>
	Launching the Contacts app .....	42
	Contacts Settings .....	42
	Setting up your profile .....	42
	Adding contacts.....	43
	Marking your favorite contacts .....	43
	Setting up your VIPs .....	44
	Importing contacts .....	44
	Exporting contacts.....	44

## 4 Your precious moments

<b>Capture moments</b> .....	<b>45</b>
Launching the Camera app .....	45
Camera home screen .....	46
Photo Locations .....	46
Camera settings .....	47
Video settings .....	47
Others settings .....	47
Advanced camera features .....	48
<b>Using the Photos app</b> .....	<b>53</b>
Viewing files from your social network or cloud storage.....	53
Viewing the photo location .....	53
Sharing files from the Photos.....	53
Deleting files from the Photos .....	54
Editing images.....	54

## 5 Work hard, play harder

<b>Browser</b> .....	<b>55</b>
Launching the Chrome app.....	55
Adding a new tab .....	55
Bookmarking pages .....	55
Clearing the browser cache .....	56
<b>Email</b> .....	<b>56</b>
Setting up email accounts.....	56
Adding email accounts.....	57
Setting up a Gmail account .....	57
<b>Do It Later</b> .....	<b>58</b>
Adding to-do tasks .....	58
Prioritizing to-do tasks .....	58
Deleting to-do tasks .....	58
<b>File Manager</b> .....	<b>59</b>
Accessing the internal storage .....	59
Accessing the external storage device .....	59
Accessing Cloud storage.....	59
<b>Tango</b> .....	<b>60</b>
Using Tango.....	60

## 6 Staying connected

<b>Wi-Fi</b> .....	<b>61</b>
Enabling Wi-Fi .....	61
Connecting to a Wi-Fi network.....	61
Disabling Wi-Fi.....	62

<b>Bluetooth®</b> .....	<b>62</b>
Enabling Bluetooth® .....	62
Pairing your ASUS Phone to a Bluetooth device .....	63
Unpairing your ASUS Phone from the Bluetooth device .....	63
<b>Airplane mode</b> .....	<b>64</b>
Enabling Airplane mode .....	64
Disabling Airplane mode .....	64
<b>Mobile Hotspot and Tethering</b> .....	<b>65</b>
USB Tethering .....	65
Mobile Hotspot .....	66
Bluetooth Tethering .....	67

## **Index**

## Conventions used

To highlight key information in this manual, some text are presented as follows:

---

**IMPORTANT!** This message contains vital information that must be followed to complete a task.

---

---

**NOTE:** This message contains additional information and tips that can help complete tasks.

---

---

**CAUTION!** This message contains important information that must be followed to keep you safe while performing tasks and prevent damage to your ASUS Phone data and components.

---

## Care and safety

### Guidelines



Road safety comes first. We strongly recommend not to use your device when driving or operating any type of vehicle.



This device should only be used in environments with ambient temperatures between 0°C (32°F) and 35°C (95°F).



Turn off your device in restricted areas where the use of mobile devices is prohibited. Always obey rules and regulations when in restricted areas, such as, in aircraft, movie theater, in hospitals or near medical equipment, near gas or fuel, construction sites, blasting sites and other areas.



Use only AC adapters and cables approved by ASUS for use with this device. Refer to the rating label on the bottom of your device and ensure that your power adapter complies with this rating.



Do not use damaged power cables, accessories, and other peripherals with your device.



Keep your device dry. Do not use or expose your device near liquids, rain, or moisture.



You can put your device through x-ray machines (such as those used in conveyor belts for airport security), but do not expose the device to magnetic detectors and wands.



The device screen is made of glass. If the glass gets broken, stop using the device and do not touch the broken glass parts. Immediately send device for repair to ASUS-qualified service personnel.



Do not listen at high volume levels for long periods to prevent possible hearing damage.



Disconnect the AC power before cleaning your device. Use only a clean cellulose sponge or chamois cloth when cleaning your device screen.



Send device for repair to ASUS-qualified service personnel only.

## Proper disposal



Risk of explosion if battery is replaced by an incorrect type. Dispose of used batteries according to the instructions.



Do not throw your device in municipal waste. This product has been designed to enable proper reuse of parts and recycling. The symbol of the crossed out wheeled bin indicates that the product (electrical, electronic equipment and mercury-containing button cell battery) should not be placed in municipal waste. Check local regulations for disposal of electronic products.



Do not throw the battery in municipal waste. The symbol of the crossed out wheeled bin indicates that the battery should not be placed in municipal waste.



DO NOT throw the device in fire. DO NOT short circuit the contacts. DO NOT disassemble the device.

---

**NOTE:** For FCC and IC e-labelling information, please go to **Settings > About > Regulatory information**.

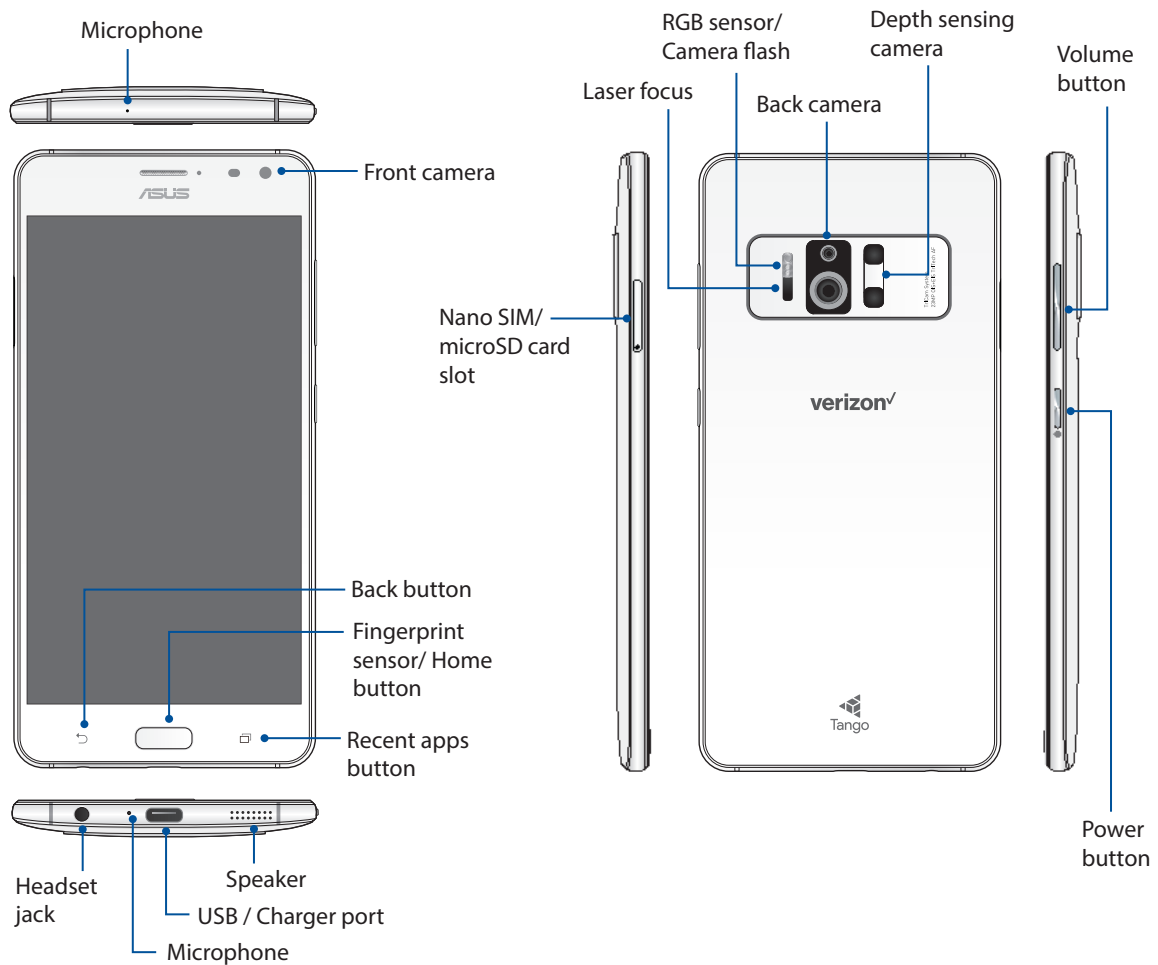
---

# Get your Zen ready!

# 1

## Parts and features

Take a hold of your device and have it up and running in a jiffy.



**IMPORTANT!** Keep the device, particularly the touch screen, dry all the time. Water or other liquids can cause the touch screen to malfunction.



## Installing a memory card

Your ASUS Phone supports a microSD™, microSDHC™, and microSDXC™ memory card with up to 128 GB of capacity.

---

**NOTE:**

- Some memory cards may not be compatible with your ASUS Phone. Ensure that you use only compatible memory cards to prevent loss of data, damage to your device, or memory card, or both.
  - The microSD card is sold separately.
- 

**CAUTION!** Be extra careful when handling a memory card. ASUS is not responsible for any data loss or damage incurred to your memory card.

---

To install a memory card:

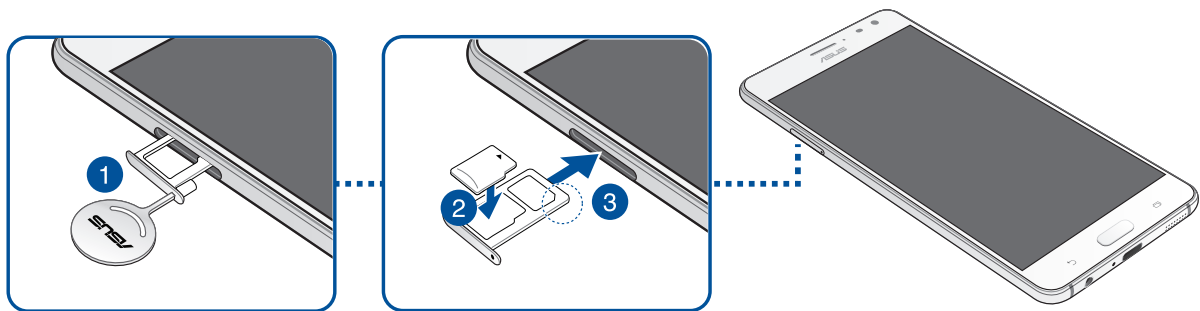
1. With the phone facing up, insert the tool that came with your phone into the hole on the SIM/microSD card tray and gently press to open the tray.

---

**CAUTION!**

- Be careful not to damage the card slot cover or injure your fingernails when you remove the cover.
  - Do not forcibly remove, shear, or distort the card slot cover.
- 



2. Place the microSD card into the tray with the gold contacts facing down (as shown).
3. Gently push the tray back in until it's securely closed.



## Removing a memory card

---

### CAUTION!

- Be extra careful when handling a memory card. ASUS is not responsible for any data loss or damage incurred to your memory card.
  - Eject the memory card properly to safely remove it from device. To eject the memory card, go to **Home** >  > **Settings** > **Storage** >  .
- 

To remove a memory card:

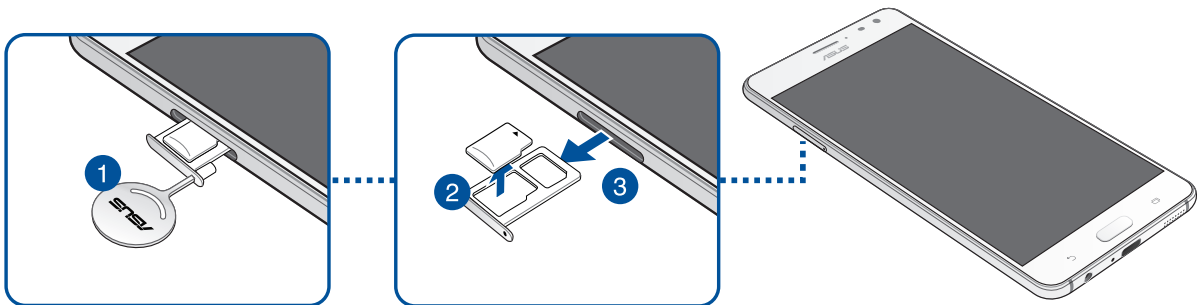
1. With the phone facing up, insert the tool that came with your phone into the hole on the SIM/microSD card tray and gently press to open the tray.

---

### CAUTION!

- Be careful not to damage the card slot cover or injure your fingernails when you remove the cover.
  - Do not forcibly remove, shear, or distort the card slot cover.
- 

2. Remove the microSD card from the tray.
3. Gently push the tray back in until it's securely closed.



## Installing a nano SIM card

Your phone already has a SIM card installed. Your nano SIM card slot supports LTE, WCDMA and EDGE/GSM bands.

---

**NOTE:** To prevent connector damage, ensure to use a standard nano SIM card without a SIM adapter or the use of a cutter.

---

**CAUTION!** Be extra careful when handling a nano SIM card. ASUS is not responsible for any data loss or damage incurred to your nano SIM card.

---

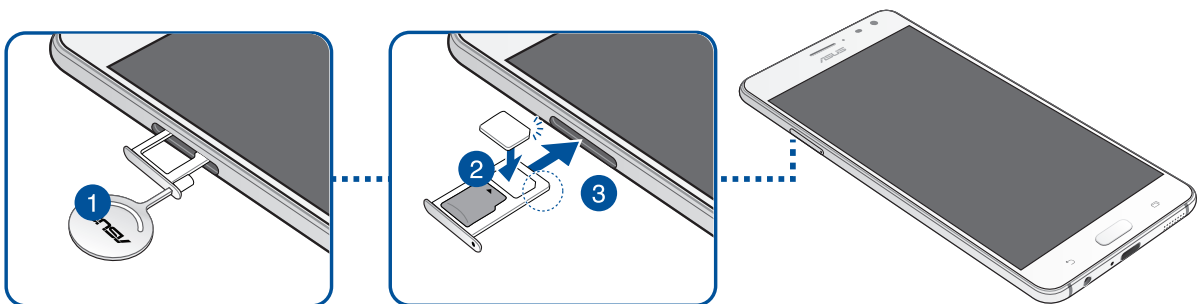
To install a nano SIM card:

1. With the phone facing up, insert the tool that came with your phone into the hole on the SIM/microSD card tray and gently press to open the tray.

**CAUTION!**

- Be careful not to damage the card slot cover or injure your fingernails when you remove the cover.
  - Do not forcibly remove, shear, or distort the card slot cover.
- 

2. Place the nano SIM card into the slot (as shown) with the gold contacts facing down.
3. Gently push the tray back in until it's securely closed.



## Removing a nano SIM card

---

**CAUTION!** Be extra careful when handling a nano SIM card. ASUS is not responsible for any data loss or damage incurred to your nano SIM card.

---

To remove a nano SIM card:

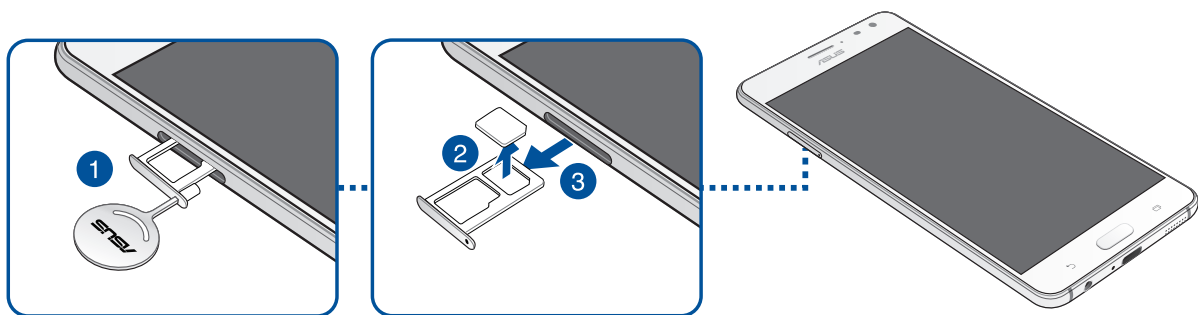
1. With the phone facing up, insert the tool that came with your phone into the hole on the SIM/microSD card tray and gently press to open the tray.

---

**CAUTION!**

- Be careful not to damage the back cover or injure your fingernails when you remove the cover.
  - Do not forcibly remove, shear, or distort the back cover.
- 

2. Remove the nano SIM card from the slot.
3. Gently push the tray back in until it's securely closed.



## Charging your ASUS Phone

Your ASUS Phone comes partially charged but you must charge it fully before using it for the first time. Read the following important notices and cautions before charging your device.

---

### **IMPORTANT!**

- For safety purposes, use **ONLY** the bundled power adapter and cable to avoid damaging your device and prevent the risk of injury.
- Peel off the protective film on the AC power adapter and cable before using it with your device.
- Ensure to plug the AC power adapter to a compatible power outlet. You can plug the AC power adapter to any compatible 100~240 V outlet.
- The output voltage of the AC power adapter for this device is DC 5V, 2A or 9V, 2A.
- When using your ASUS Phone while plugged-in to a power outlet, the power outlet must be near your device and easily accessible.
- Do not use or expose your ASUS Phone near liquids, rain, or moisture.
- Do not use your ASUS Phone near heating equipment or in places where there is likelihood of high temperature.
- Keep your ASUS Phone away from sharp objects.
- Do not place objects on top of your ASUS Phone.

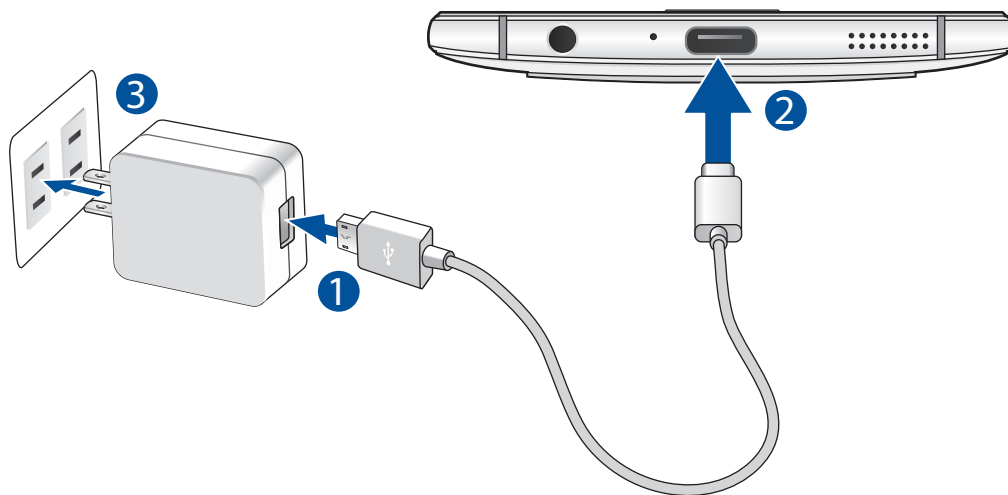
---

### **CAUTION!**

- While charging, your ASUS Phone can become warm. This is normal, however, if your device becomes unusually hot, disconnect the cable from your device and send the device, including the AC power adapter and cable to an ASUS-qualified service personnel.
  - To prevent any damage to your ASUS Phone, AC adapter, or cable, ensure that the cable, AC adapter, and your device are connected properly before charging.
-

To charge your ASUS Phone:

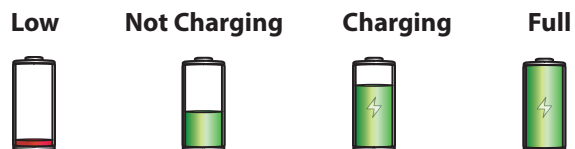
1. Connect the USB Type-C cable to the power adapter.
2. Connect the USB Type C cable to your ASUS Phone.
3. Plug the power adapter into a grounded power outlet.



---

**IMPORTANT!**

- Charge your ASUS Phone for eight (8) hours before using it in battery mode for the first time.
- The status of battery charge is indicated by the following icons:



4. When fully-charged, disconnect the USB cable from your ASUS Phone first before unplugging the AC power adapter from the power outlet.

---

**NOTE:**

- You can use your device while charging but it may take longer to fully charge the device.
  - Charging your device via USB port of a computer may take longer to fully charge the device.
  - If your computer does not provide enough power for charging via USB port, charge your ASUS Phone using the AC power adapter plugged to a power outlet instead.
-

## Battery power conservation tips

The battery charge is the lifeline of your ASUS Phone. Here are some battery power conservation tips that help preserve the power of your ASUS Phone's battery.

- Close all running apps that are not in use.
- When not in use, press the power button to put the device in sleep mode.
- Activate Power Saving in Power Management settings.
- Decrease brightness of display.
- Keep the speaker volume to a low level.
- Disable Wi-Fi feature.
- Disable Bluetooth feature.
- Disable PlayTo feature.
- Disable GPS.
- Disable the screen auto-rotate feature.
- Disable all auto-sync features on your device.

## Turning your ASUS Phone on or off

### Power on your device

To turn your phone on, press and hold the Power button.

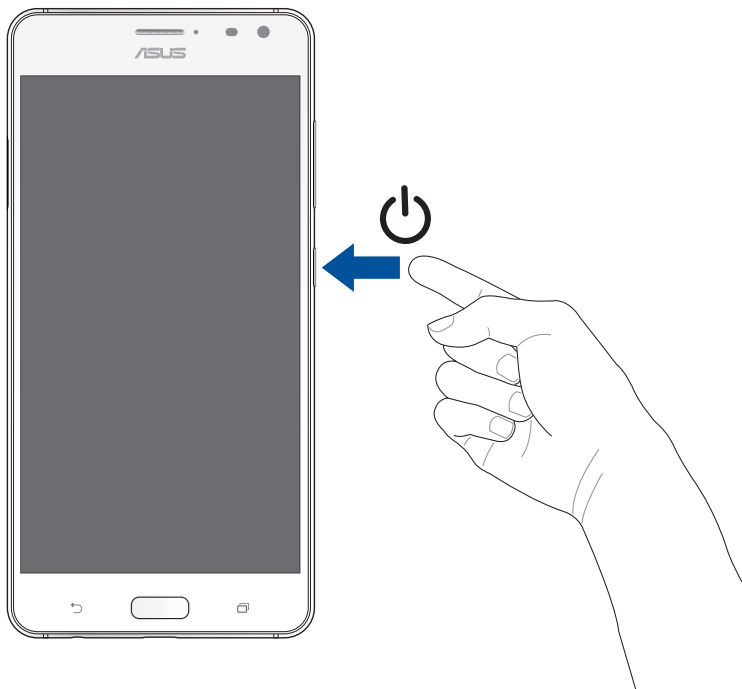
### Power off your device

To turn your phone off, press and hold the Power button. Then tap **Power off** > **OK**.

### Suspend your device

To put your device in sleep mode:

- a. Press the Power button to suspend your device.
- b. You can also double-tap the blank screen from your device's home page to suspend the device.





## Starting for the first time

When you turn your ASUS Phone on for the first time, Setup Wizard will guide you through the setup process. Follow the onscreen instructions to select your language, select input methods, set up your mobile network, Wi-Fi, sync accounts, and configure your location services.

Your wireless device can determine its (and your) physical, geographical location (Location Information) and can associate Location Information with other data. Additionally, certain applications, services and programs are capable of accessing, collecting, storing and using Location Information and disclosing Location Information to others. You should use caution when determining whether or not Location Information should be made available to others and you should review any applicable third party privacy policies before providing access. To limit potential unauthorized access to your Location Information, Verizon Wireless phones are preset to E911 only, which will only allow emergency response personnel to locate you if you dial 9-1-1 from your phone. Other wireless devices (such as Broadband Data Cards or devices without a keypad or user interface) may or may not have such limitations and location settings available. By enabling location settings you are permitting third party access to Location Information through software, widgets or peripheral components you choose to download, add or attach to your wireless device or through web access, messaging capabilities or other means and you are authorizing Verizon Wireless to collect, use and disclose your Location Information as appropriate to provide you with any location services that you enabled.

Use your Google account to set up your device. If you do not have a Google account yet, go ahead and create one.

## Google Account

Using a Google Account allows you to fully utilize these Android OS features:

- Organize and see all your information from anywhere.
- Automatically backup all your data.
- Leverage Google services conveniently from anywhere.

## Using the touchscreen

Use these gestures on the touchscreen to launch apps, access some settings, and navigate your ASUS Phone.

### Launching apps or selecting items


Do any of the following:

- To launch an app, simply tap on it.
- To select an item such as in File Manager app, simply tap on it.



### Moving or deleting items

Do any of the following:

- To move an app or widget, tap and hold then drag it to the location where you want it to be.
- To delete an app or widget from the Home screen, tap and hold then drag it to  **Remove**.

### Moving through pages or screens

Do any of the following:

- Swipe your finger to the left or to the right to switch between screens or to flip through a series of images.
- Scroll your finger up or down to go through web pages or list of items.

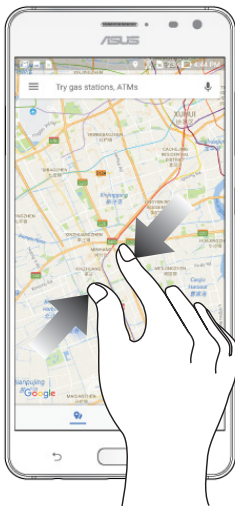
## Zooming in

Spread apart your two fingers on the touch panel to zoom in an image in Photos or Maps, or zoom in a web page.



## Zooming out

Bring together your two fingers on the touch panel to zoom out an image in Photos or Maps, or zoom out of a web page.



## Securing your ASUS Phone

Use the security features of your ASUS Phone to prevent unauthorized access of information.

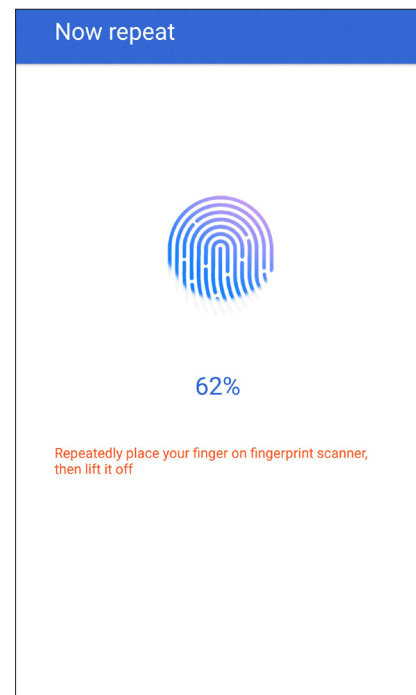
### Fingerprint ID sensor

Fingerprint ID sensor prevents others from using your ASUS phone without your permission. You can use your fingerprint to unlock your device, access your phone calls and data. When you set up your fingerprint ID, you also need to set up your screen lock method for device startup.

### Starting your ASUS phone for the first time



To set up your fingerprint ID when using your ASUS Phone for the first time:

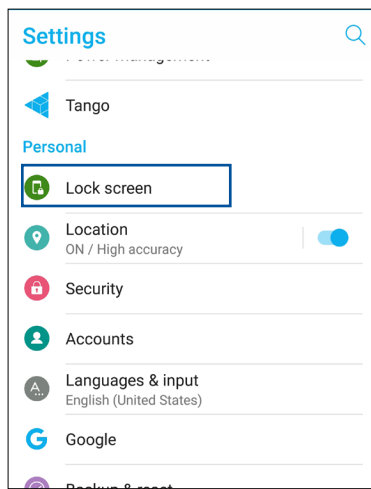
1. Ensure that the fingerprint identification module and your finger are clean and dry.
2. From the Welcome page, follow the on-screen instructions to the **Protect your phone** page and tick **Set up fingerprint**.
3. Click **NEXT** to the **About Fingerprint Unlock** page, and then click **Add fingerprint** to choose a screen lock method.
4. Place your finger on the home button of your device, adjust your finger and try to cover different areas of your finger repeatedly until your fingerprint is captured.
5. Click **NEXT** to complete the setup.



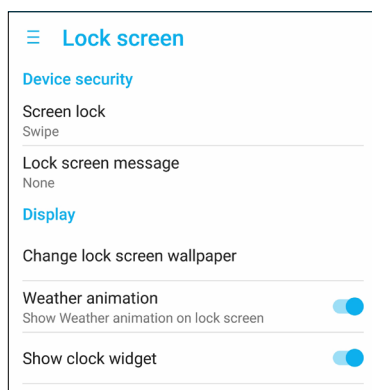
## Setting up your fingerprint ID from Settings

To set up your fingerprint ID from **Settings**:

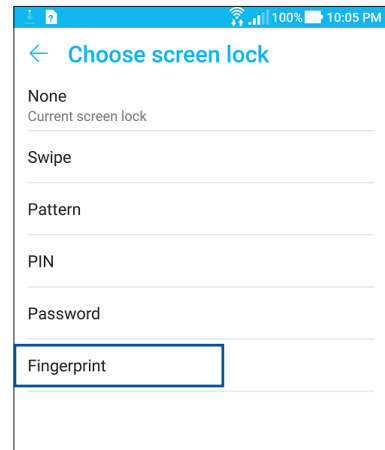
1. Ensure that the fingerprint scanner and your finger are clean and dry.
2. Launch the Settings screen by doing any of the following:
  - Launch Quick settings then tap .
  - Tap  > **Settings**.
3. Select **Lock screen**.



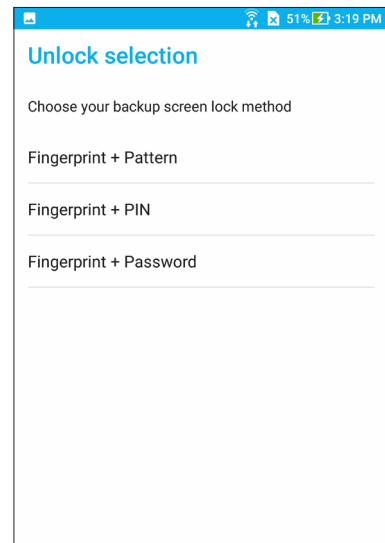
4. In the next screen, tap **Screen lock**.



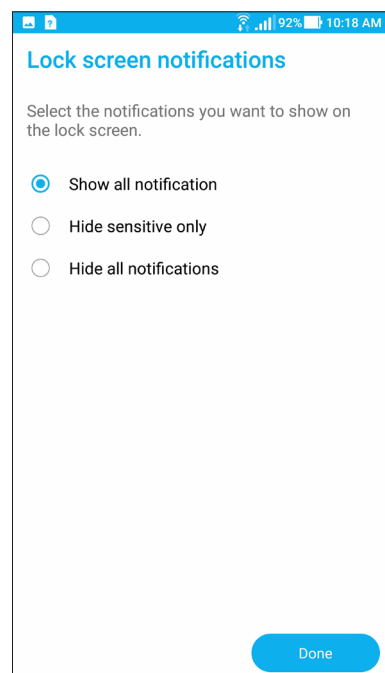
5. In the next screen, tap **Fingerprint**.



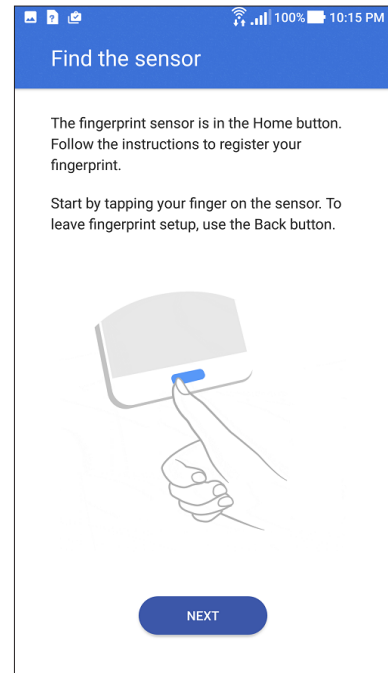
6. Follow the instructions to set up your backup screen lock method.



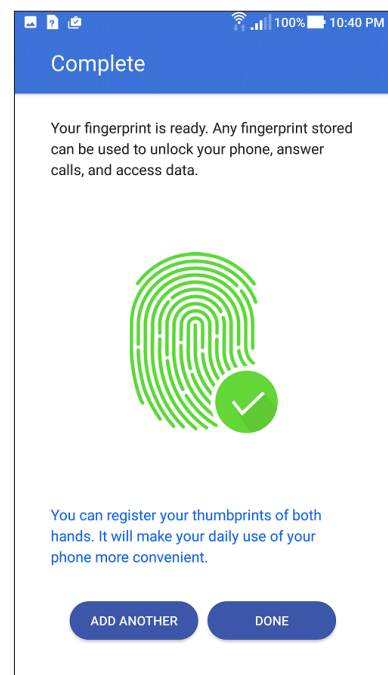
7. Select how you want to display your notifications on the lock screen, then tap **Done**.



8. Tap **Next** and follow the instructions to register your fingerprint.



9. When finished, tap **Done**.



---

**NOTE:** You can add more fingerprint IDs from **Settings > Security > Fingerprint**.

---


## Lock Screen

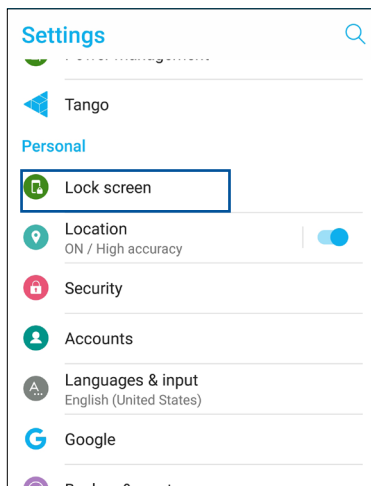
By default, the lock screen appears after turning on your device and while waking it up from suspend mode. From the lock screen, you can proceed to your device's Android system by swiping on your touch screen panel.

Your device's lock screen can also be customized to regulate access to your mobile data and apps.

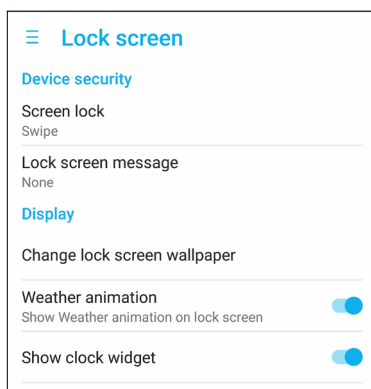
## Customizing your lock screen

If you want to change your lock screen settings from the default **Swipe** option, refer to the following steps:

1. Launch Quick settings then tap .
2. Select **Lock screen**.



3. In the next screen, tap **Screen lock**.





4. Tap the screen lock option you would like to use.

---

**NOTE:** For more details, refer to the section **Lock screen options**.

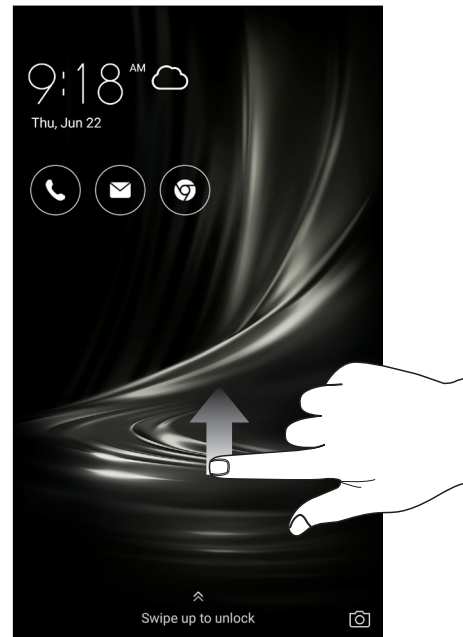
---

## Lock screen options

Choose from these options to lock your ASUS Phone.

### Swipe

Swipe up to unlock your ASUS Phone.



### PIN

Key in at least four numbers to set a PIN.

---

**IMPORTANT!** Ensure to remember the PIN that you created to unlock your device

---

A screenshot of the "Choose your PIN" screen. The screen has a white background with a blue header. The text "Choose your PIN" is at the top. Below it, a message says "PIN must be at least 4 digits". There is a text input field with a vertical cursor. Below the input field is a checkbox labeled "Show PIN". At the bottom, there are two buttons: "Cancel" and "Continue". Below these buttons is a numeric keypad with numbers 1-9, 0, and a backspace key. The "Next" button is also visible.

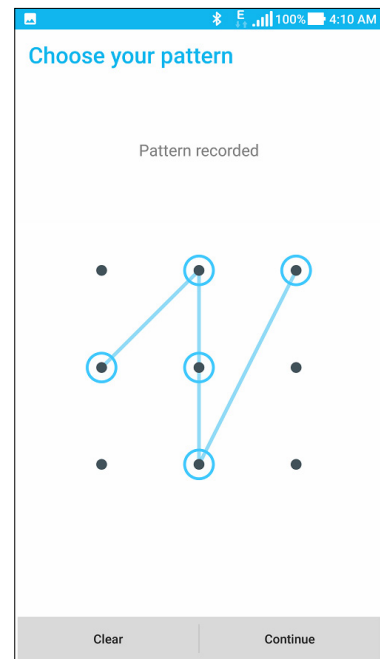
## Pattern

Slide your finger on the dots and create a pattern.

---

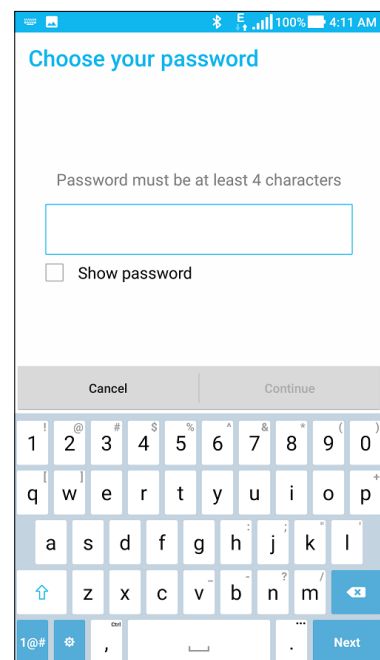
**IMPORTANT!** You can create a pattern with a minimum of four dots. Ensure to remember the pattern that you created to unlock your device.

---



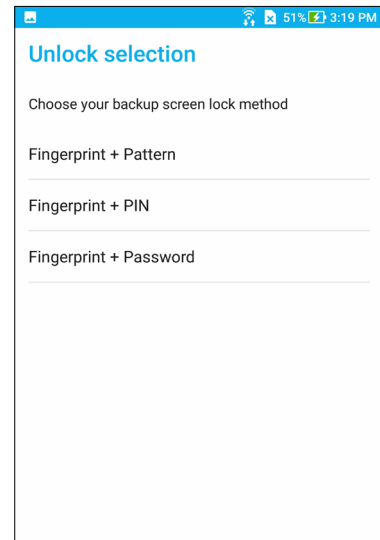
## Password

Key in at least four characters to create a password.




## Fingerprint

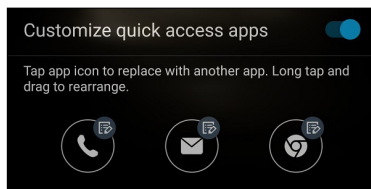
Select your backup screen lock method and register your fingerprint ID.



## Customizing the quick access buttons

By default, your lock screen includes quick access buttons for these apps: Phone, Email, and Chrome. Change this default settings and customize these buttons to launch other apps on the lock screen using the following steps:

1. Launch Quick settings then tap .
2. Select **Lock screen**.
3. Tap **Quick access**.
4. Under the Quick access screen, select the app icon you want to be replaced.

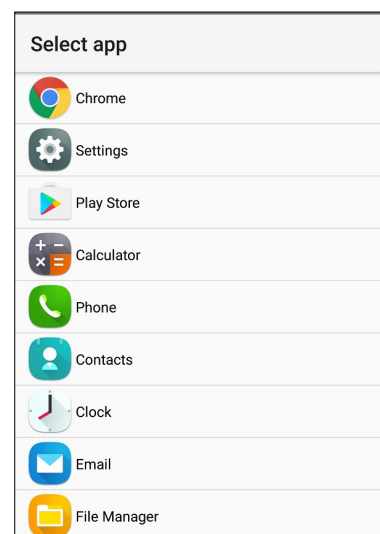


5. Select the app you want to replace the app on the Quick access screen.

---

**NOTE:** Scroll up or down to view the current list of apps.

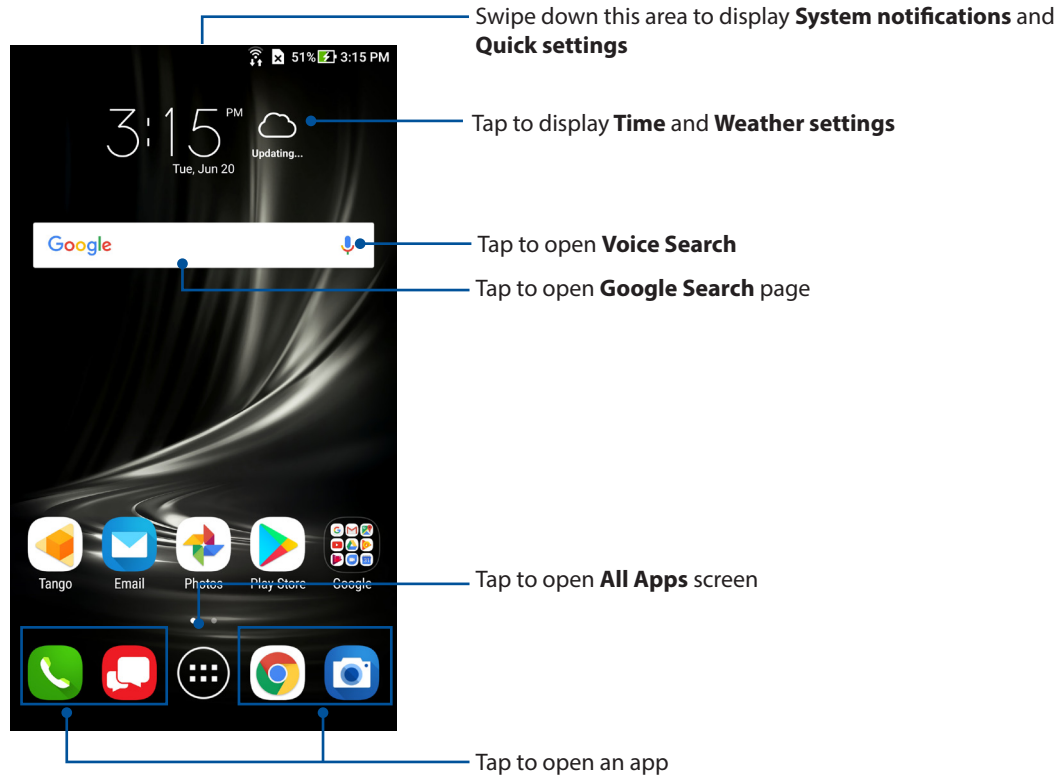
---



# Zen Home features

## Home screen

Get reminders of important events, app and system updates, weather forecasts right from your Home screen.



Swipe the Home screen to the left or right to display the extended Home screen.

---












**NOTE:** For details on adding more pages to your Home screen, see the *Editing your Home screen* section.

---

## Understanding notification icons

These icons are shown on the status bar and will guide you of the current status of your ASUS Phone.

---

	<b>Network signal bar</b> Shows the signal strength of your mobile network.
	<b>Wi-Fi</b> Shows the signal strength of your Wi-Fi connection.
	<b>Battery life</b> Shows the battery status of your ASUS Phone.
	<b>MicroSD card</b> Shows that a microSD card is inserted in your ASUS Phone.
	<b>Screenshot</b> Shows that you took screenshots of your ASUS Phone.
	<b>Airplane mode</b> Shows that your ASUS Phone is on Airplane mode.
	<b>Mobile Hotspot</b> Shows that mobile hotspot of your ASUS Phone is enabled.
	<b>Mute mode</b> Shows that Mute mode is enabled.
	<b>Download status</b> Shows the download status of an app or file.
	<b>4G LTE</b> Shows your ASUS Phone is connected to 4G LTE network.
	<b>Bluetooth</b> Shows that your Bluetooth is enabled.

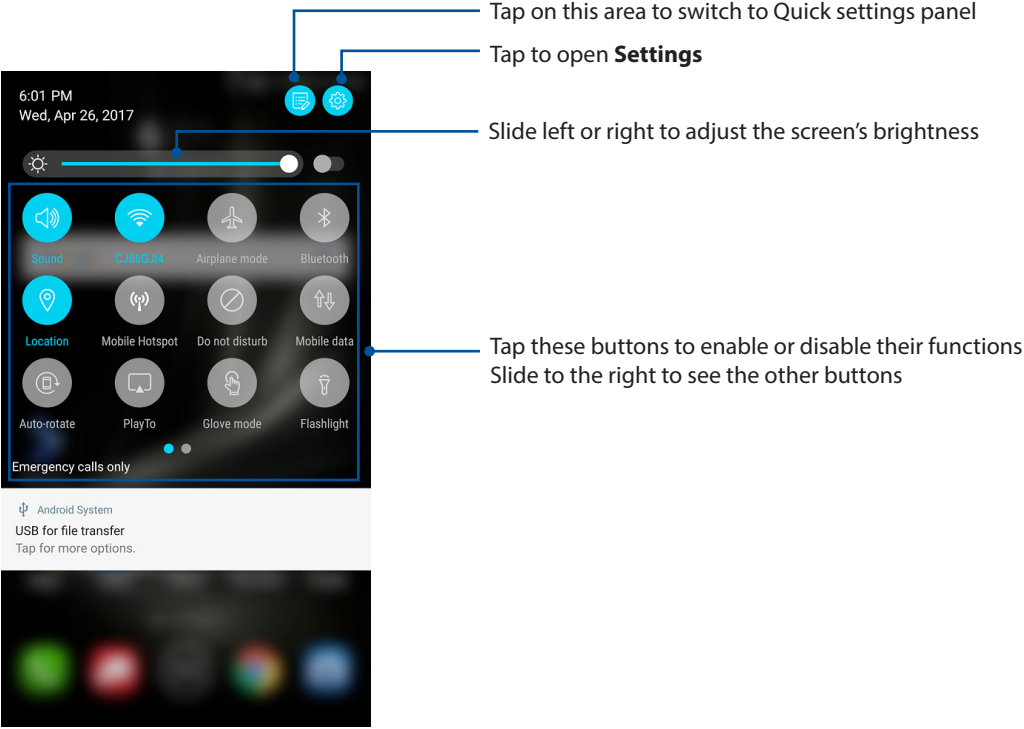
---

# Quick settings

The Quick settings panel provides a one-tap access to some of the wireless features and settings of your ASUS Phone. Each of these features are represented by a button.



To launch the Quick settings panel, swipe down with two fingers from the top of your ASUS Phone.

**NOTE:** A blue button indicates that the feature is currently enabled while a gray button indicates a disabled feature. The green buttons refer to individual utilities that you can quickly access via the Quick Settings Notification Panel.



## Adding or removing buttons

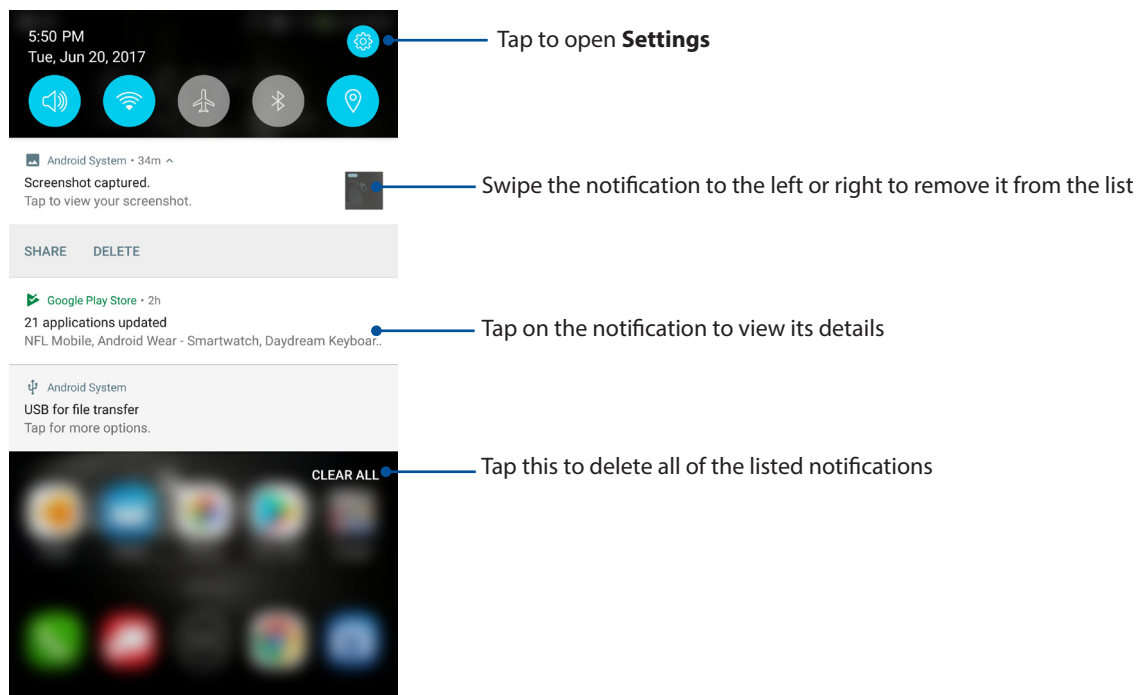
To add or remove existing buttons from the ASUS Quick settings notification panel:

1. Launch Quick settings then tap .
2. Drag and drop a button or tile up or down to add or or remove to the Quick settings notification panel.
3. Tap  to go back and view the current ASUS Quick settings notification panel.

## System notifications

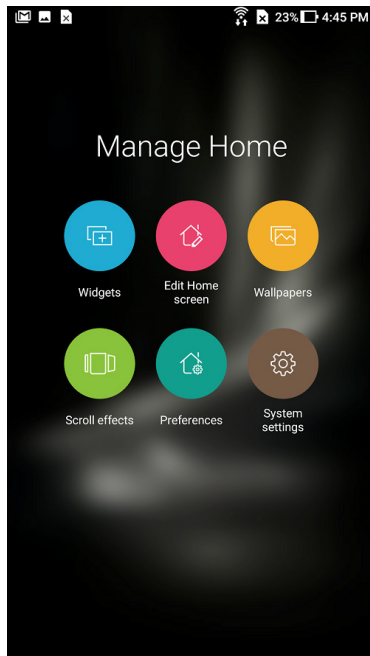
From System notifications, you can see the latest updates done and system changes made on your ASUS Phone. Most of these changes are data and system-related.

To launch the System notifications panel, swipe down with one finger from the top of your ASUS Phone.



## Personalizing your Home screen

Stamp your own personality on your Home screen. Select an attractive design as your wallpaper, and add widgets for a quick review of important info. You can also add more pages so you can add and quickly access or view more apps or widgets on your Home screen.



## Widgets


You can put widgets, which are small dynamic apps, on your Home screen. Widgets provide you with quick-views of the weather forecast, calendar events information, battery status, and more.

### Adding widgets

To add a widget:

1. Tap and hold an empty area on your Home screen and select **Widgets**.
2. From the Widgets screen, tap and hold a widget, then drag it to an empty area on your Home screen.

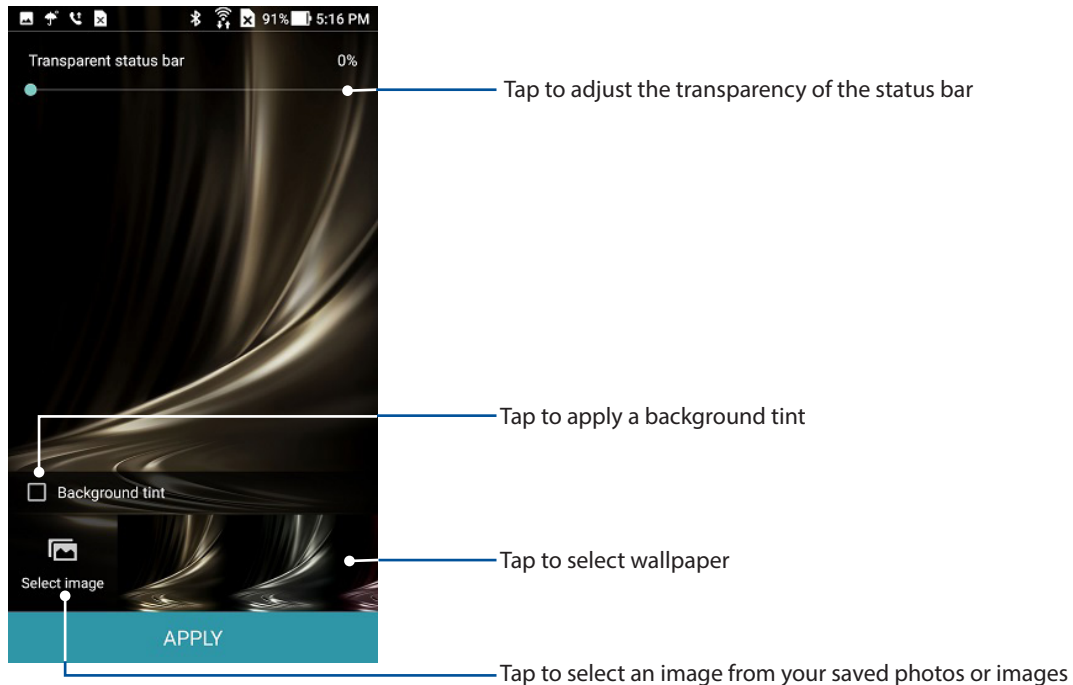
### Removing widgets

From your Home screen, tap and hold a widget, then drag it to  **Remove** on top of your screen.




## Wallpapers

Let your apps, icons, and other Zen elements sit on an attractively designed wallpaper. You may add a translucent background tint to your wallpaper for readability and clarity. You can also select a Live Wallpaper to make your screen come alive.



### Applying wallpaper and background tint

To apply wallpaper and background tint:

1. Tap and hold an empty area on your Home screen and select **Wallpapers**.
2. Tick **Background tint**, then adjust the transparency level. If you do not want to add a background tint to your wallpaper, skip to step 4.
3. Tap  then select a color.
4. Select a wallpaper, then tap **Apply**.

---

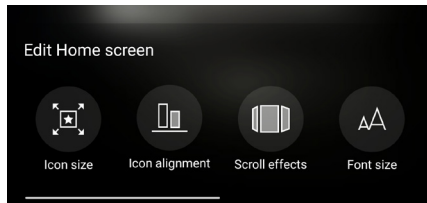
**NOTE:** You can also set up your wallpaper settings from  > **Settings** > **Display** > **Wallpaper**.

---

## Editing your Home screen

You can extend your Home screen, select a scroll effect, change the icon and font, adjust the size and color of the icon and font, and align the icons to the top or bottom of your screen.



1. Tap and hold an empty area on your Home screen and select **Edit Home screen**.
2. Tap a feature to edit your Home screen.



## Setting up the date and time

By default, the date and time displayed on your Home screen automatically syncs when you are connected to the Internet.

To change the date and time settings:

1. Launch the Settings screen by doing any of the following:
  - Launch Quick settings then tap .
  - Tap  > **Settings**.
2. Select **Date & time**.
3. Click the slider to turn off **Automatic date & time**.
3. Click the slider to turn off **Automatic time zone**.
4. Select the time zone and manually set the date and time.
5. You can opt to use the 24-hour format if desired.
6. Select the date format that you want to display.

---



**NOTE:** For more details, see the **Clock** section.

---

## Setting up your ringtone and alert sounds

Set up the sound for your notifications such as emails and event alerts. You can also choose to enable or disable the touch sounds or screen lock sound.

To set up the sound settings:


1. Launch the Settings screen by doing any of the following:
  - Launch Quick settings then tap .
  - Tap  > **Settings**.
2. Select **Sound & Vibration**.
3. Set up your preferred sound settings.

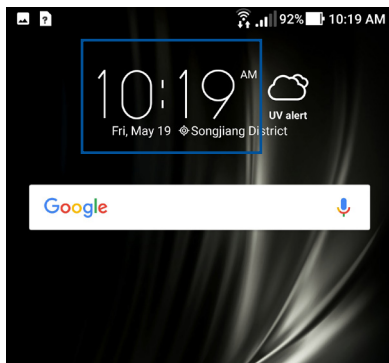
## Clock

Customize the time zone settings of your ASUS Phone, set alarms, and use your ASUS Phone as a stop watch using the Clock app.

## Launching Clock

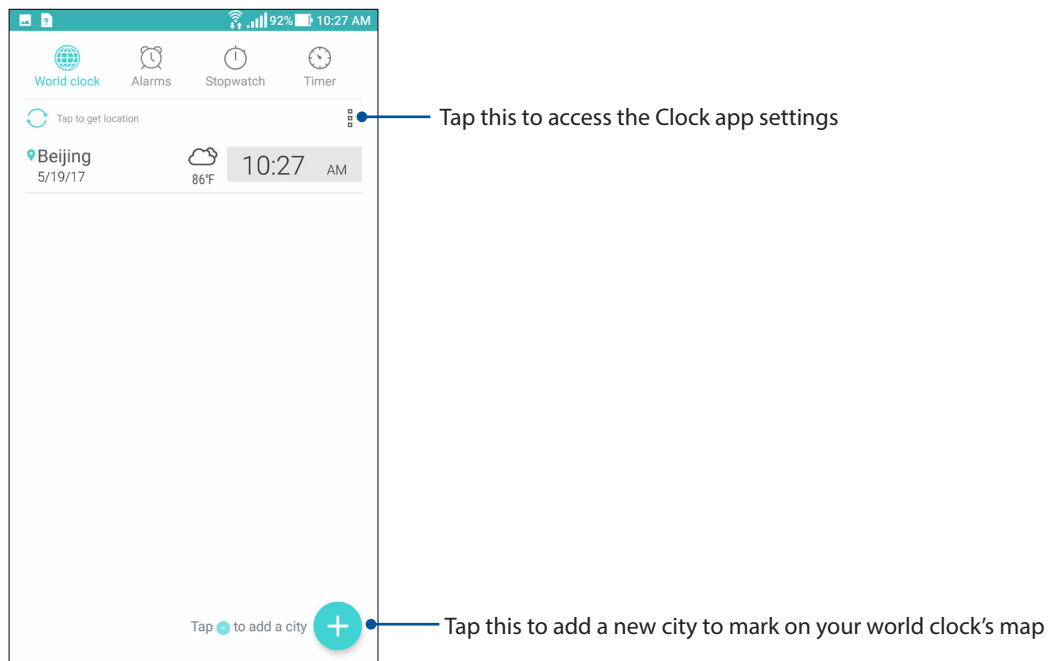
Launch the Clock app using either of the following options:

- Tap  > **Clock**.
- From your ASUS Phone's home screen, tap the digital clock display.



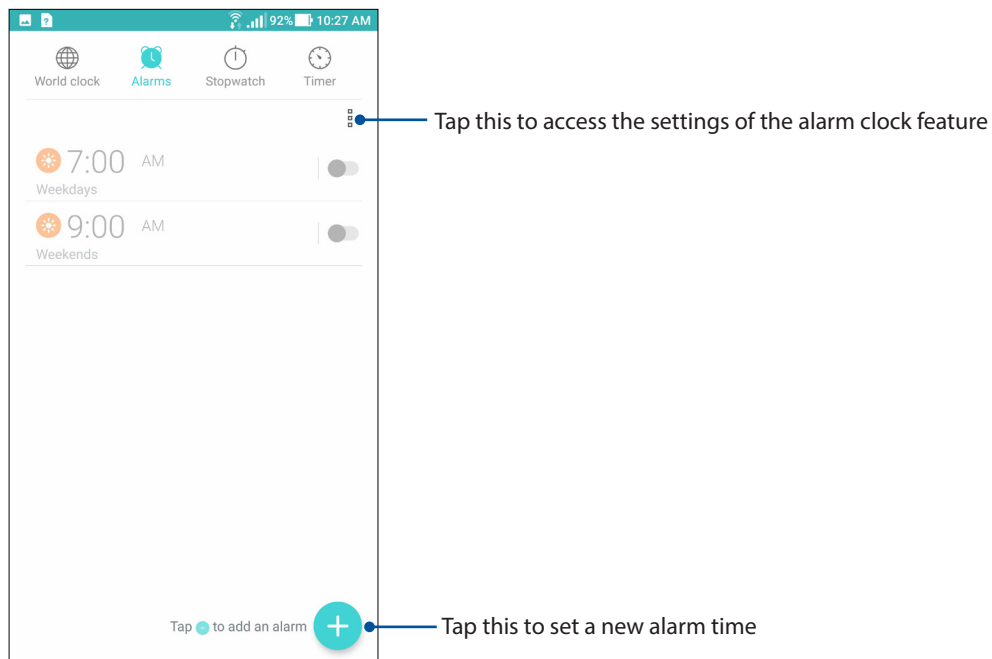
## World Clock

Tap  to access the world clock settings of your ASUS Phone.




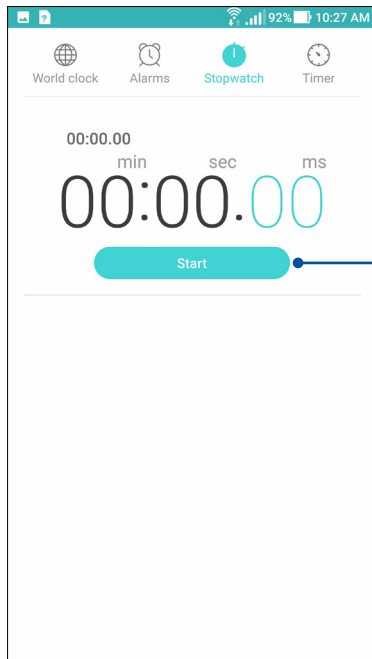
## Alarm clock

Tap  to access the alarm clock settings of your ASUS Phone.



## Stopwatch

Tap  to use your ASUS Phone as a stopwatch.



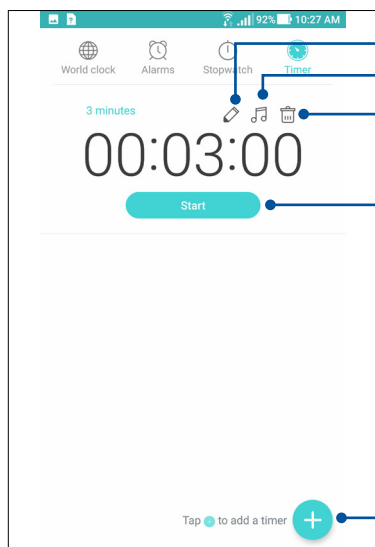
Tap this button to start running the stopwatch feature

## Timer

You may set multiple timer options for your ASUS Phone. To do this, follow the steps below.

### Setting the timer

1. Tap  to access the timer feature of your ASUS Phone.



Tap this to rename the timer label

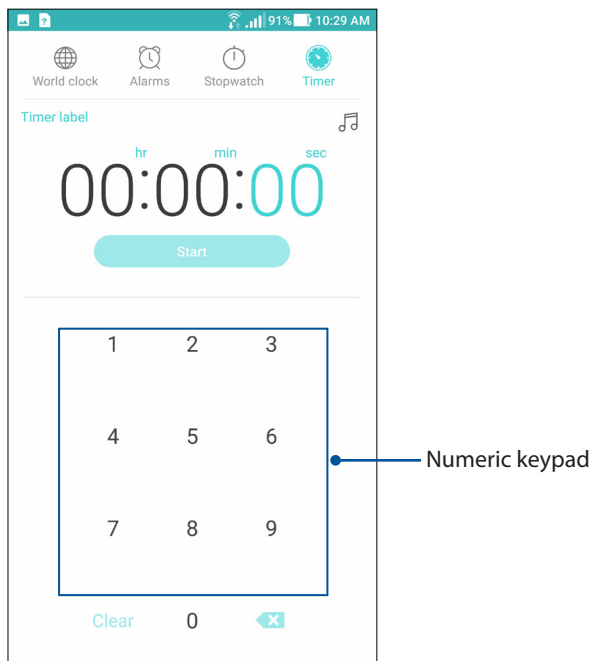
Tap this to set the ringtones for the timer

Tap this to delete previously set timer

Tap to start the timer

Tap this to set a new timer

2. Use the numeric keypad to input your target time then tap start to start the timer.

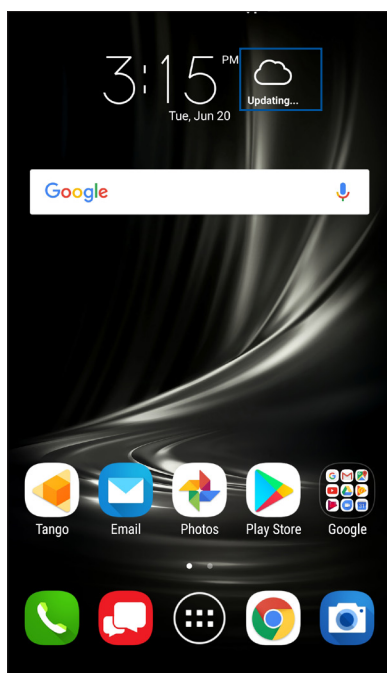


## Weather

Get real-time weather updates straight from your ASUS Phone using the weather app. Using Weather, you can also check other weather details from around the world.

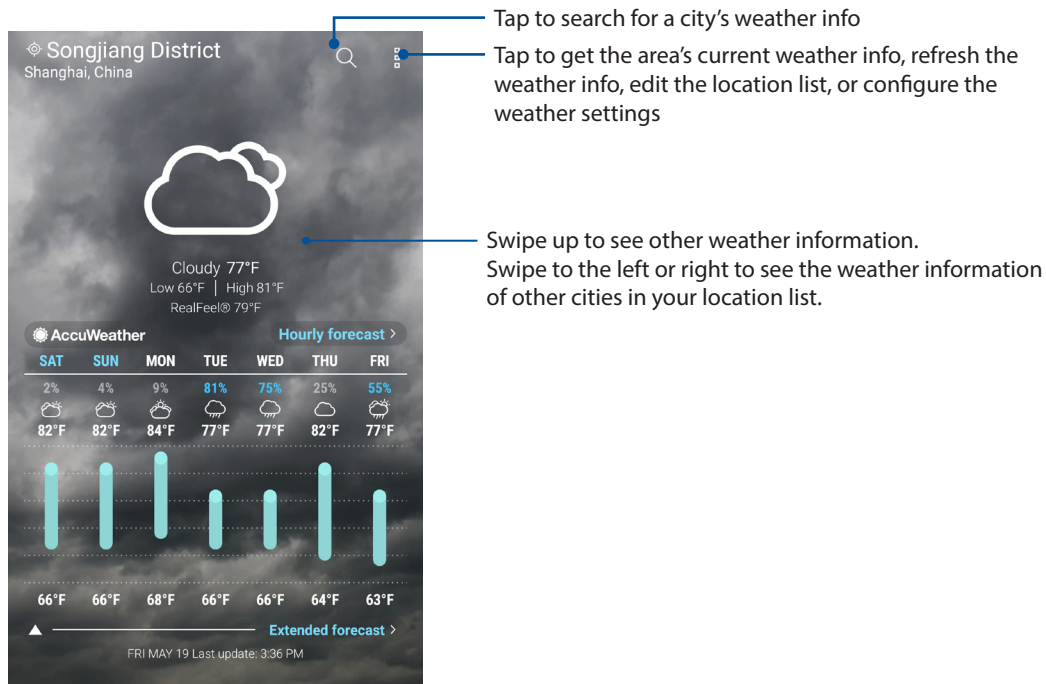
### Launching Weather

From your Home screen, tap the weather icon.



## Weather home screen

Set up and get your current location's weather updates as well as other parts of the world.





## Voice Search

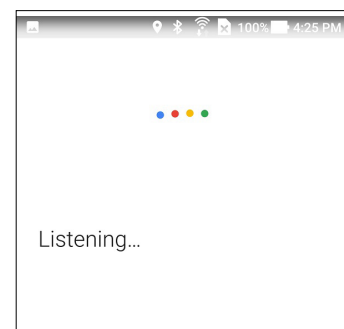
Make voice commands to your ASUS Phone then watch it listen and take action using the Voice Search app. Using Voice Search, you can make voice commands to accomplish the following:

- Search for data and information online or on your ASUS Phone
- Launch apps inside your ASUS Phone
- Get directions going to a location

**IMPORTANT!** Your ASUS Phone must be connected to the Internet to be able to use this feature.

## Launching Voice Search

1. Launch the Voice Search app by doing any of the following:
  - Tap  on the Google search bar.
  - Tap  > **Google** > **Voice Search**.
2. Start saying your voice command.




**NOTE:** Speak clearly and use concise phrases when talking to your ASUS Phone. It also helps to start your commands with a verb related to the ASUS Phone feature you want to use.

## Power Saver

Fully maximize or extend the power of your ASUS Phone even when it is idle or while it stays connected to your network.

### Setting up Power Saver

Optimize the power of your ASUS Phone according to your needs with some smart power saving options.

1. Tap  > **Settings** > **Power management**
2. Select any of these battery modes:
  - **High Performance:** Intelligently adjusts CPU performance and provides high brightness level.
  - **Normal:** Intelligently adjusts CPU performance and brightness.
  - **Power saving:** Wi-Fi and mobile network are temporarily turned off when your ASUS Phone is on sleep mode.
  - **Super saving:** Keeps your alarm settings awake. Wi-Fi, mobile network, location, and Bluetooth are turned off.
  - **Customized:** Allows you to customize your power saving settings.
3. For advanced settings, tap **Smart switch**. Then you can choose **Switch according to battery level** or **Switch according to schedule** for more options.

### Customizing Power Saver

Configure the brightness level and network behavior to save power.


1. Select **Customized**, then tap  .
2. Tap **Brightness** or **Wi-Fi and Mobile data** to make further adjustments.

## Setting your ASUS Phone identity

Know your ASUS Phone's identity such as serial number, IMEI (International Mobile Equipment Identity) number, or model number.

This is important, as when you lose your ASUS Phone, you can contact your mobile carrier and provide the information to blacklist the unauthorized use of your ASUS Phone.

To display your ASUS Phone's identity:


1. Tap  then tap **Settings**.
2. On the Settings screen, slide down then tap **About phone**, which displays the status, legal information, model number, operating system version, hardware, and software information of your ASUS Phone.
3. To see the serial number and IMEI information of your ASUS Phone, tap **Status**.



## Keeping your device up-to-date

Keep your ASUS Phone in the loop of Android system updates and upgraded apps and features.

### Updating your system

1. Tap  then tap **Settings**.
2. On the Settings screen, slide down to display other items then tap **System updates**.
3. Tap **Check for new system update**.

---

**NOTE:** You can preview the last time your ASUS Phone's system was updated at the Last update check: of the System update window.


---

### Storage

You can store data, apps, or files on your ASUS Phone (internal storage), on an external storage, or on an online storage. You need an internet connection to transfer or download your files on an online storage. Use the bundled USB cable to copy files to or from the computer to your ASUS Phone.

### Backup and reset

Back up data, Wi-Fi passwords, and other settings to Google servers using your ASUS Phone.

1. Tap  then tap **Settings > Backup & reset**.
2. From the Backup & reset window, you can:
  - **Backup my data:** This feature backs up your data, Wif-Fi passwords, and other settings to Google servers when enabled.
  - **Backup account:** Allows you to specify the account you to be associated when you save your backup.
  - **Automatic Restore:** This feature facilitates restoration of backed up settings and data when you reinstall an app.
  - **Network settings reset:** This feature resets all network settings including Wi-Fi, mobile network, and Bluetooth.
  - **Factory data reset:** This feature erases all data from the internal storage of your ASUS Phone.
  - **System settings reset:** This feature resets the system to its default settings. It does not affect your downloaded apps, personal data, or your protected settings (security, language, and account settings).

# Keeping in touch

# 3

## Managing contacts

Organize your contacts and easily stay in touch with them emails, or social networks. Group your contacts as Favorites to quickly get in touch with them, or group them as VIPs to get notified about any upcoming events.

You can also sync your contacts with your email or social network accounts, link contacts' info for easy access in one place, or filter the contacts you want to keep in touch with.

## Launching the Contacts app

From your Home screen, tap  > **Contacts**


## Contacts Settings

Select how you would want to display your contacts from the Contacts settings. Such display options include displaying only those contacts with phones, sorting list by first/last name, or viewing contact names as first/last names first.

To set up your Contacts settings, tap  > **Settings** from the Contacts app.

## Setting up your profile

Make your ASUS Phone truly your own and set up your profile info.

1. Launch the Contacts app then tap **SET UP MY PROFILE** or **ME**.
2. Fill in your info such as name, email address, mobile or home number. To add other info, tap **ADD ANOTHER FIELD**.
3. When you've completed your info, tap .

## Adding contacts

Add contacts to your device, corporate, Google, or other email accounts and fill in more important contact information such as contact numbers, email addresses, special events for VIPs, and more.

1. Launch the Contacts app then tap **+**.
2. Fill in the necessary information such as mobile or home number, email address, or group where you want to put the contact in.
3. After filling in the information and you want to add more contact numbers or email addresses, tap **Add new**.
4. If you want to add other contact information, tap **Add another field**.
5. When you've completed the info, tap **✓**.

## Adding an extension number to a contact number

You can add an extension number to a contact's number.

1. From the Add contact screen, fill in the necessary fields.
2. On the Phone field, key in the main line then tap **,** or **;**, and add the extension number.
3. Tap **✓** to save the number.

## Customizing your contact's profile

Edit your contact's info, add a photo, set a ringtone, or take a photo as a cover for your contact's profile.

1. Launch the Contacts app then select the contact whose info or profile you want to edit or customize.
2. Tap **✎** to make the changes from the contact's profile page.

## Marking your favorite contacts

Set your frequently-accessed contacts as your favorites to be able to locate them quickly from the Contacts app.

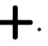
1. Launch the Contacts app.
2. From the Contacts app screen, tap **👤 > Favorites** then tap **+**.
3. Select the contacts that you want to mark as favorites then tap **✓**. All contacts that you added appear on your Favorites list.

## Setting up your VIPs

Group your contacts as VIPs to get notified about upcoming anniversaries, birthdays, and other important events. You'll also get alerts about any emails from your VIPs.


### Set up your VIP from the Contacts app home screen

To set up your VIP from the Contacts app home screen:

1. Launch the Contacts app.
2. From the Contacts app screen, tap  > **VIP** then tap .
3. Select the contacts you want to add as VIPs, then tap . All contacts that you added appear on your VIP list.


## Importing contacts

Import your contacts and their respective data from one contact source to your ASUS Phone, email account, or a nano SIM card.

1. Launch the Contacts app then tap  > **Manage contacts**.
2. Tap **Import/Export** then select where you would like to import your contacts from.
3. Tap to select where you would like to save the contacts to.
4. Tick to select the contacts that you wish to import and when done, tap **Import**.

## Exporting contacts

Export your contacts to any of the storage accounts in your ASUS Phone.

1. Launch the Contacts app then tap  > **Manage contacts**.
2. Tap **Import/Export** then select where you would like to export your contacts to.
3. Tap to select where you would like to export the contacts from:
4. Tick the contacts that you wish to export and when done, tap **Export**.

# Your precious moments

# 4

---

**NOTE:** Screenshots are for reference only. Actual apps shown on-screen may vary per model.

---

## Capture moments

### Launching the Camera app

Capture images and record videos using your ASUS Phone's Camera app. Refer to any of the steps below to open the Camera app.

#### From the home screen

Tap .

#### Using the volume key

While your ASUS Phone is on sleep mode, double-click the volume key to wake it up and immediately launch the Camera app.

---

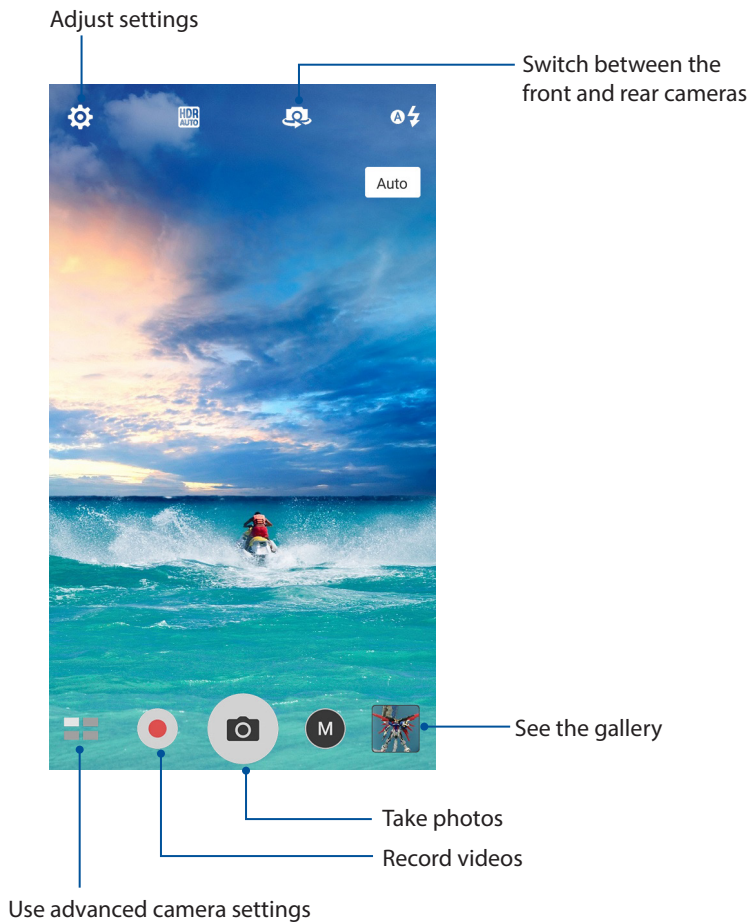
**NOTE:** Before using the volume key to launch the Camera app, enable this function from **Settings** > **Lock screen**, then slide **Instant camera** to **ON**.

---

## Camera home screen

Your ASUS Phone's camera is equipped with auto-scene detection and auto-image stabilizer features. It also features a video stabilization function that helps prevent shakiness while video recording.

Tap the icons to start using your camera and explore the image and video features of your ASUS Phone.



## Photo Locations

To enable the location tagging feature, refer to the following steps:

1. Turn on the location access from **☰ > Settings > Location**.
2. Ensure that you have shared your location to Google Map.
3. From the Camera app's home screen, tap **⚙️ > 🔑** and activate **Location services** before you take the photo.



## Camera settings

Adjust the appearance of your captured images by configuring your camera's settings using the steps below.

---

**IMPORTANT!** Apply the settings first before taking images.

---

1. On the camera's home screen, tap  > .
2. Scroll down and configure the available options.



## Video settings

Adjust the appearance of your recorded videos by configuring your camera's settings using the steps below.

---

**IMPORTANT!** Apply the settings first before taking images.

---

1. On the camera's home screen, tap  > .
2. Scroll down and configure the available options.


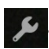
## Others settings

Adjust advanced settings to customize your camera.

---

**IMPORTANT!** Apply the settings first before taking images.

---

1. On the camera's home screen, tap  > .
2. Scroll down and configure the available options.

## Advanced camera features

Explore new ways of capturing images or videos and make captured moments extra special using the advanced camera features of your ASUS Phone.

---



**IMPORTANT!** Apply the settings first before taking images. Available features may vary per model.

---

### HDR Pro

The High-dynamic-range (HDR) Pro feature allows you to take more detailed images for low-light and highly contrasting scenes. HDR is recommended for use when taking images on brightly lit locations, helping balance out the colors produced on your image.




#### Capturing HDR Pro photos

1. From the Camera app's home screen, tap  > **HDR Pro**.
2. Tap  to start capturing HDR Pro photos.


### Beautification

Have fun during and after taking photos of your family and friends using the Beautification feature of your ASUS Phone. When enabled, this feature allows you to make live beauty enhancements on your subject's face before you press the shutter button.

#### Capturing Beautification photos

1. From the Camera app's home screen, tap  > **Beautification**.
2. Tap  to adjust the Beautification settings to apply to the photo.
3. Tap  to start capturing the photo.

---

**NOTE:** Drag  towards the center of the screen to set a countdown timer.

---

### Low light

Using PixelMaster, your camera's light sensitivity is increased by up to 400% to enhance noise reduction and boost color contrast by up to 200%. Use this mode to transform any subject into a great photo or video—with or without ample natural lighting.

#### Capturing Low light photos

1. From the Camera app's home screen, tap  > **Low light**.

---



**NOTE:** An owl icon will automatically appear in dim light conditions for you to tap and enable the Low light mode.

---

2. Tap  to start capturing photos.



## Capturing Low light videos

1. From the Camera app's home screen, tap  > **Low light**.
2. Tap  to start recording a video.

## Night



Take well-lit photos even on night time or on low-light situations using the Night feature of your ASUS Phone.

---

**NOTE:** Keep your hands steady before and while the ASUS Phone is capturing the image to prevent blurry results.

---






## Capturing Night photos

1. From the Camera app's home screen, tap  > **Night**.
2. Tap  to start capturing Night photos.

## Depth of field

Take macro shots with a soft background using the Depth of Field. This feature suits close up photos of subjects for a more defined and dramatic result.

## Capturing Depth of Field photos

1. From the Camera app's home screen, tap  > **Depth of Field**.
2. Tap  to start capturing photos.
3. Drag the slider to  or  to increase or decrease the background blur.
4. Tap  to save the photo.

## Filter




Take photos using different effects such as Pixelize, Cartoon, Vintage, LOMO or other effects.

---



**NOTE:** Filter should be selected before taking the photo.

---

## Capturing Filter photos

1. From the Camera app's home screen, tap  > **Filter**
2. Tap  and select an effect to apply to the photo.
3. Tap  to start capturing photos.




## Applying effects to photos

1. Tap the thumbnail and select the photo.
2. Tap  and then tap  to select your preferred Filter.
3. Adjust the effect using the slider and tap **DONE** to apply the effect.
4. Tap **SAVE** to save the photo.

## Selfie

Take advantage of your rear camera's high megapixel specs without worrying about pressing the shutter button. Using face-detection, you can set your ASUS Phone to detect up to four faces using the rear camera then automatically capture your selfie or group selfie.



## Capturing Selfie photos

1. From the Camera app's home screen, tap  > **Selfie**.
2. Tap  to choose how many people should be included in the photo.
3. Use the rear camera to detect faces and wait for your ASUS Phone to start beeping, counting down until it captures the photo.
4. Tap  to save the photo.

## Panorama

Capture images from various angles using Panorama. Images captured from a wide angle perspective are automatically stitched together using this feature.

## Capturing panoramic photos

1. From the Camera app's home screen, tap  > **Panorama**.
2. Tap  then pan your ASUS Phone horizontally (to the left or right) or vertically (upward or downward) to capture the scenery.

---

**NOTE:** While panning your ASUS Phone, a timeline of thumbnails appears on the lower part of your screen as it captures the scenery.









---

3. Tap  when finished.

## Miniature

Simulate the tilt-shift effect of DSLR lenses via the Miniature feature. Using this feature allows you to focus on specific areas of your subject, adding a bokeh effect that can be used on both photos and video using your ASUS Phone.

### Capturing Miniature photos

1. From the Camera app's home screen, tap  > **Miniature**.
2. Tap  or  to select your focus area, then use your two fingers to adjust the focus area's size and position.
3. Drag the slider to  or  to increase or decrease the background blur. Drag the slider to  or  to increase or decrease saturation.
4. Tap  to capture Miniature photos.

## Time rewind



After selecting **Time Rewind**, your shutter starts taking burst shots a few seconds before and after you actually press the shutter button. As a result, you get a timeline of images where you can choose the best image to save on your Photo.

---

**NOTE:** The Time Rewind feature can only be used on the rear camera.

---

### Capturing Time Rewind photos

1. From the Camera app's home screen, tap  > **Time Rewind**.
2. Tap  to start capturing photos.
3. The Time Rewind viewer appears onscreen on top of the captured photo. Rotate the button on the viewer to browse through the photos you just took.

---

**NOTE:** Tap **Best** to view the best photo suggestion from the timeline.



---

4. Tap  when finished.

## Slow motion

The slow motion video feature allows you to record videos for slow-motion playback.




### Recording slow motion videos

1. From the Camera app's home screen, tap  > **Slow motion**.
2. Tap  to start taking Slow motion videos.

## Time lapse

The time lapse video feature of your ASUS Phone allows you to capture stills for automatic time lapse playback. In effect, events seem to move in a fast-forward manner though they actually occurred and were recorded between long intervals.



### Recording Time lapse videos

1. From the Camera app's home screen, tap  > **Time lapse**.
2. Tap  then select the time lapse interval.
3. Tap  to start taking Time lapse videos.

## Selfie Panorama

Capture selfies from various angles using Selfie Panorama. Images captured are automatically stitched together using this feature.

### Capturing Selfie Panorama photos

1. From the Camera app's home screen, switch to the front camera and tap  > **Selfie Panorama**.
2. Tap  then pan your ASUS Phone to the left or right to capture the image.

---

**NOTE:** While panning your ASUS Phone, a timeline of thumbnails appears on your screen as it captures the image.

---



3. Tap  when finished.

## Using the Photos app

View images and play videos on your ASUS Phone using the Photos app.

This app also allows you to edit, share, or delete image and video files stored in your ASUS Phone. From Photos, you can display images in a slideshow or tap to view the selected image or video file.


From your Home screen, launch the Photos app using either of the following options:

- Tap  > **Google** > **Photos**.
- From your ASUS Phone's home screen, tap .

## Viewing files from your social network or cloud storage

By default, your Photos displays all the media files on your ASUS Phone by timeline.

To view the media files from other locations accessible via your ASUS Phone:

1. From the main screen, tap .
2. Tap any of the source locations to view their respective media files.

---


### NOTE:

- You can download photos to your ASUS Phone from your cloud account and use them as your wallpaper.
  - For details on using photos or images as your wallpaper, see the **Wallpapers** section.
- 



## Viewing the photo location

Enable the location access on your ASUS Phone, and get the location details on your photos. Your photos' location details include the area where the photos are taken, as well a map of the location via Google Map.



To view the details of a photo:

1. Launch the Photos app, and select the photo whose details you want to view.
2. Tap the photo then tap .

## Sharing files from the Photos


1. From the Photos app's home screen, tap  > **Select**.
2. Tap the files you want to share, and a check mark appears on top of the image you select.
3. Tap  then select from the list where you want to share the files.

## Deleting files from the Photos

1. From the Photos app's home screen, tap  > **Select**.
2. Tap the files you want to delete, and a check mark appears on top of the image you select.
3. Tap .

## Editing images

The Photos app also features its own image editing tools that you can use to enhance images saved on your ASUS Phone.

1. From the Photos app's home screen, tap the folder where the files are located.
2. After opening the folder, tap the image you want to edit.
3. Once the image is opened, tap it again to show its functions.
4. Tap  to open the image editing toolbar.
5. Tap any of the icons on the editing toolbar to apply changes to the image.

## Zooming in/out the thumbnails or images

From the Photos screen or your selected image, spread apart your fingers on the touchscreen panel to zoom in. To zoom out, bring your fingers together on the touchscreen panel.

# Work hard, play harder

# 5

## Browser


Your browser's state-of-the-art Chromium-based engine lets you surf the Internet at a fast loading speed.

---

**IMPORTANT!** Before doing any Internet surfing or Internet-related activities, ensure that your ASUS Phone is connected to a Wi-Fi network. For more details, see the **Staying connected** section.


---

## Launching the Chrome app

From your Home screen, tap .

## Adding a new tab

Hide the current website and open a new window to continue surfing or browsing another website.

1. From the current page, tap  > **New tab**.
2. Enter the URL address in the URL field and continue enjoying browsing the Internet from your ASUS Phone.
3. If you want to do add another tab, follow step 1 again.

---




**NOTE:**

- Opening many websites in your browser slows down its loading performance.
  - If Internet connection slows down, try clearing the cache. For details, refer to section **Clearing the browser cache**.
- 

## Bookmarking pages


Bookmark your favorite pages or websites so you can go back and browse them again.

To bookmark a page:

On the page, tap  >  to bookmark the current page. The next time you open your browser, you can quickly tap  > **Bookmarks** to see your bookmarked pages.

## Clearing the browser cache

Clear the browser cache to delete temporary Internet files, websites, and cookies that are temporarily stored in your ASUS Phone. This helps improve the loading performance of your browser.

1. Launch the browser.
2. Tap  > **Settings** > **Privacy** > **Clear browsing data**.
3. Tick the information you would like to clear, and tap **Clear browsing data**.

## Email

Add Outlook, Yahoo! Mail, AOL, Verizon.net, Exchange, or other (POP3/IMAP) accounts so you can receive, create, and browse emails right from your device. You can also sync your email contacts from these accounts to your ASUS Phone.

---

**IMPORTANT!** Your ASUS Phone must be connected to a Wi-Fi or mobile network so you can add an email account or send and receive emails from added accounts. For more details, see the **Staying connected** section.

---

## Setting up email accounts

Set up your existing personal or work email account so you can receive, read, and send emails from your ASUS Phone.

1. From the Home screen, tap **Email** to launch the Email app.
2. Tap the mail provider you want to set up.
3. Key in your email address and password and tap **Next**.

---

**NOTE:** Wait while your device automatically checks your incoming and outgoing mail server settings.

---

4. Configure the **Account settings** such as inbox checking frequency, sync days, or notification for incoming emails. When done, tap **Next**.
5. Key in an account name that you want to be displayed in the outgoing messages, then tap **Next** to log into your inbox.

---


**NOTE:** If you want to set up your work account on your ASUS Phone, ask for the email settings from your network administrator.

---



## Adding email accounts

If you have more than one existing email account, you can add more email accounts so you can receive, read, and send emails right from your ASUS Phone.

1. From the Home screen, tap **Email** to launch the Email app.
2. Tap  > **Settings**, then tap **+** to add an email account.
3. Tap the mail provider that you want to add.
4. Follow the succeeding instructions to complete adding another email account.

---

**NOTE:** You may also refer to steps 3 to 5 in the *Setting up email accounts* section to complete this setup process.

---

## Setting up a Gmail account

Set up your Gmail account to get into Google-related services and apps as well as receive, send, and browse emails right from your ASUS Phone.

1. From the Home screen, tap **Google** then tap **Gmail**.
2. Tap **Add an email address** and select **Google**.
3. Key in your existing Gmail account and tap **NEXT**, then key in your password and tap **NEXT**.

---

**NOTE:**



- Tap **Or create a new account** if you do not own a Google account.
  - When signing in, you have to wait while your device communicates with Google servers to setup your account.
- 

3. Read the Terms of Service and Privacy Policy, then tap **ACCEPT** to continue.
4. After configuring Google services for your account, tap **NEXT** > **TAKE ME TO GMAIL** to go to your Gmail account.

# Do It Later


## Adding to-do tasks

Create important to-do tasks to organize your work or social activities in your professional or social life.


1. From the Home screen, tap  > **ASUS** > **Do It Later**.
2. Tap  and select any of the icons for the task you want to create.
3. Fill in the necessary information.
4. When you're done, tap **Done**.

## Prioritizing to-do tasks

Set the importance level of your to-do tasks so you can prioritize and act on them accordingly.

1. From the Home screen, tap  > **ASUS** > **Do It Later**.
2. Tap the task that you want to set as a top priority.
3. Under the **Importance** field in the task screen, select **High**.
4. When you're done, tap **Done**.



---

**NOTE:** High-priority to-do tasks are marked as  on your Do It Later list. This allows you to quickly determine which to-do tasks need immediate actions.

---

## Deleting to-do tasks

You can delete any completed, overdue, or unnecessary to-do tasks from the Do It Later app.


1. From the Home screen, tap  > **ASUS** > **Do It Later**.
2. Tap the task you want to remove from the list, then tap  .

## File Manager

Using File Manager allows you to easily locate and manage your data on the internal storage of your ASUS Phone and its connected external storage devices.


### Accessing the internal storage

To access the internal storage:

1. Tap  > **ASUS** > **File Manager**.
2. Tap **Internal storage** to view the contents of your ASUS Phone.

### Accessing the external storage device

To access the external storage device:

1. Insert the microSD card into your ASUS Phone.
2. Tap  > **ASUS** > **File Manager**.
3. Tap **MicroSD** to view the contents of your microSD card.

### Accessing Cloud storage

---

**IMPORTANT!** Ensure that Wi-Fi or mobile network is enabled on your ASUS Phone. For more details, see the *Staying connected* section.

---

To access files saved on your cloud storage accounts:

1. Tap  > **ASUS** > **File Manager**.
2. Tap  > **Verizon Cloud**.

# Tango

Tango lets you see more of your world! Just hold up your ASUS Phone and watch in awe as the virtual objects appear on top of your surroundings. So no matter where you are, there's always a richer, deeper experience to engage, explore, and enjoy!

## Using Tango

To use Tango:

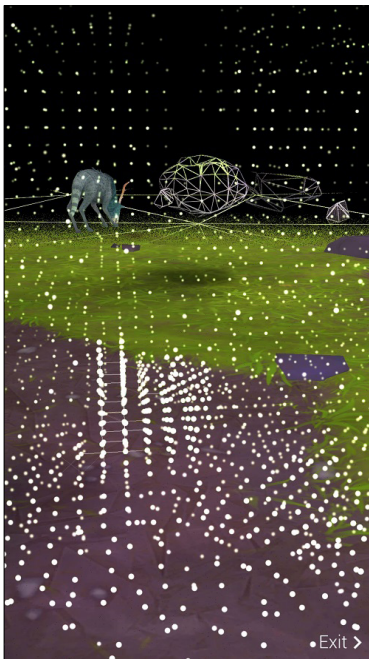
1. Launch the Tango platform to download a Tango-enabled app. To do this, tap  from the Home screen.

---

**NOTE:** If Tango is not available on your ASUS Phone, you can download it from Google Play Store.

---

2. Select, download, and install a Tango-enabled app on your ASUS Phone.
3. Launch a Tango-enabled app, then hold up or move your ASUS Phone around. Tango uses your camera and location to see and interact with your surroundings.





# Staying connected

# 6

## Wi-Fi

The Wi-Fi technology of your ASUS Phone gets you connected to the wireless world. Update your social media accounts, browse the Internet, or exchange data and messages wirelessly from your ASUS Phone.

### Enabling Wi-Fi

1. Launch the Settings screen by doing any of the following:
  - Launch Quick settings then tap .
  - Tap  > **Settings**.
2. Slide the Wi-Fi switch to the right to turn on the Wi-Fi.

---

**NOTE:** You can also enable the Wi-Fi from Quick Settings screen. Refer to section **Quick Settings** on how to launch the Quick Settings screen.

---

### Connecting to a Wi-Fi network

1. On the Settings screen, tap **Wi-Fi** to display all detected Wi-Fi networks.
2. Tap a network name to connect to it. For a secured network, you may be prompted to key in a password or other security credentials.



---

**NOTE:**

- Your ASUS Phone automatically reconnects to the network that you connected with previously.
  - Turn off the Wi-Fi feature when you're not using it to help save battery power.
-

## Disabling Wi-Fi

To disable Wi-Fi:

1. Launch the Settings screen by doing any of the following:
  - Launch Quick settings then tap .
  - Tap  > **Settings**.
2. Slide the Wi-Fi switch to the left to turn off the Wi-Fi.

---



**NOTE:** You can also disable the Wi-Fi from Quick settings screen. For details on how to launch Quick settings screen, see the [Quick settings](#) section.

---

## Bluetooth®

Use the Bluetooth feature of your ASUS Phone to send or receive files and stream multimedia files with other smart devices over short distances. With Bluetooth, you can share your media files with your friends' smart devices, send data for print with a Bluetooth printer, or play music files with a Bluetooth speaker.

### Enabling Bluetooth®

1. Do any of the following to launch the Settings screen:
  - Launch Quick settings then tap .
  - Tap  > **Settings**.
2. Slide the Bluetooth switch to the right to turn on the Bluetooth.

---

**NOTE:** You can also enable the Bluetooth from Quick settings screen. For details on how to launch Quick settings screen, see the [Quick Settings](#) section.

---

## Pairing your ASUS Phone to a Bluetooth device

Before using the Bluetooth feature of your ASUS Phone in full scale, you have to pair it first with the Bluetooth device. The ASUS Phone automatically stores the pairing connection of the Bluetooth device.

1. Turn on the Bluetooth of your ASUS Phone to make it visible to other Bluetooth devices.
2. On the Settings screen, tap **Bluetooth** to display all available devices.

---

**IMPORTANT!** If the device that you want to pair is not in the list, ensure to enable its Bluetooth feature.

---


3. In the list of available devices, tap the Bluetooth device that you want to pair with.
4. Ensure that the same pairing code is shown on both devices, then tap **Pair**.

---

**NOTE:** Turn off the Bluetooth feature when you're not using it to help save battery power.

---



## Unpairing your ASUS Phone from the Bluetooth device

1. On the Settings screen, tap **Bluetooth** to display all available and paired devices.
2. In the list of paired devices, tap  of the Bluetooth device that you want to unpair, then tap **Forget**.

## Airplane mode

Airplane mode disables wireless communication, allowing you to use your ASUS Phone safely while in-flight.

### Enabling Airplane mode



1. Launch the Settings screen by doing any of the following:
  - Launch Quick settings then tap .
  - Tap  > **Settings**.
2. Slide the Airplane mode switch to the right to turn on the Airplane mode.

---

**NOTE:** You can also enable the Airplane mode from Quick settings screen. For details on how to launch Quick settings screen, see the [Quick settings](#) section.

---

### Disabling Airplane mode

1. Launch the Settings screen by doing any of the following:
  - Launch Quick settings then tap .
  - Tap  > **Settings**.
2. Slide the Airplane mode switch to the left to turn off the Airplane mode.

---

**NOTE:** You can also disable the Airplane mode from Quick settings screen. For details on how to launch Quick settings screen, see the [Quick Settings](#) section.

---



## Mobile Hotspot and Tethering

When Wi-Fi service is not available, you can use your ASUS Phone as a modem or turn it into a mobile hotspot to get Internet access on your laptop, tablet, and other mobile devices.

---

**IMPORTANT!** Most mobile service providers may require a data plan for you to be able to use the tethering function. Contact your mobile service provider about availing of this data plan.



---

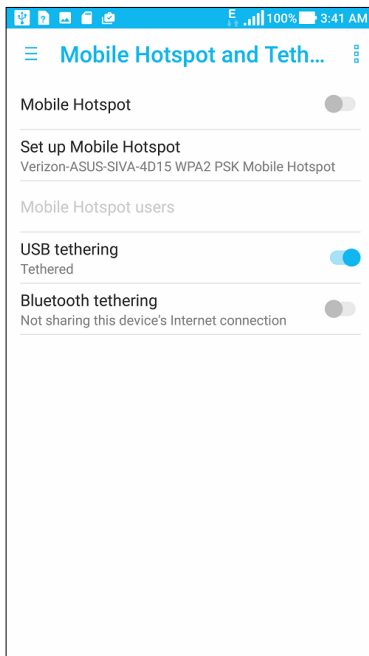
**NOTE:**

- Internet access via tethering may be slower than the standard Wi-Fi or mobile connection.
  - Only a limited number of mobile devices can tether to your ASUS Phone for Internet access.
  - Turn off the tethering feature when you're not using it to help save battery power.
- 

## USB Tethering



Enable USB tethering on your ASUS Phone and share its Internet connection with other devices.

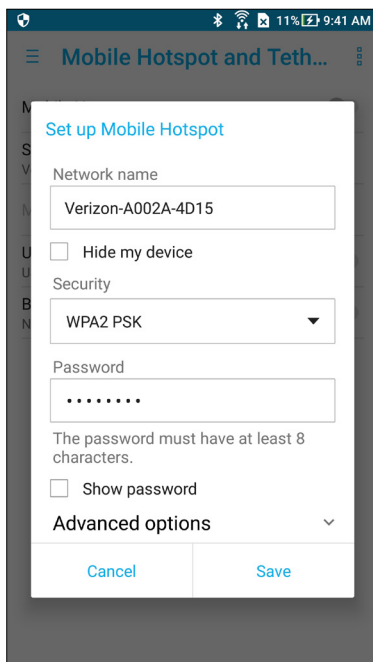
1. Connect your ASUS Phone to another device with a USB cable.
2. Do any of the following to launch the Settings screen:
  - Launch Quick settings then tap .
  - Tap  > **Settings**.
2. Tap **Mobile Hotspot and Tethering** and then tap **USB tethering** to enable tethering.



## Mobile Hotspot

Turn your ASUS Phone into a mobile hotspot to link with other devices.

1. Do any of the following to launch the Settings screen:
  - Launch Quick settings then tap .
  - Tap  > **Settings**.
2. Tap **Mobile Hotspot and Tethering** > **Set up Mobile Hotspot**.
3. Assign a unique SSID or network name and a strong password for your mobile hotspot. When done, tap **Save**.



4. From the Mobile Hotspot and Tethering screen, tap **Mobile Hotspot** to turn on the mobile hotspot on your ASUS Phone.
5. Connect other devices to your ASUS Phone's hotspot connection the same way you connect to a Wi-Fi network.

---

### IMPORTANT!

- Turning on the Mobile Hotspot disables your Wi-Fi connection.
  - Before turning on the Mobile Hotspot, ensure that mobile data is turned on.
-

## Bluetooth Tethering

Enable Bluetooth tethering on your ASUS Phone to share its Internet connection with other devices.

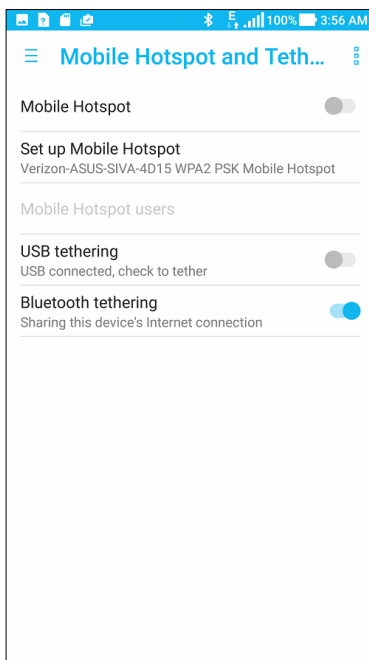
1. Enable Bluetooth on your ASUS Phone and the other device.
2. Pair both devices.

---

**NOTE:** For more details, see the *Pairing your ASUS Phone to a Bluetooth device* section.

---

3. From the Settings screen, tap **Mobile Hotspot and Tethering**, then slide **Bluetooth tethering** to **ON**.



Model name: ASUS\_A002A(V570KL)

<b>Manufacturer:</b>	ASUSTeK Computer Inc.
<b>Address:</b>	4F, No.150, LI-TE RD., PEITOU, TAIPEI 112, TAIWAN
<b>Authorised representative in Europe:</b>	ASUS Computer GmbH
<b>Address:</b>	HARKORT STR. 21-23, 40880 RATINGEN, GERMANY

# Index

## A

- Advanced camera features 48
- Airplane mode 64
  - Disabling Airplane mode 64
  - Enabling Airplane mode 64

## B

- Backup and reset 41
- Bluetooth
  - Enabling Bluetooth® 62
  - Pairing your ASUS Phone to a Bluetooth device 63
  - Unpairing your ASUS Phone from the Bluetooth device 63
- Bluetooth® 62
- Browser 55

## C

- Camera 45
  - Camera home screen 46
  - Camera settings 47
  - From the home screen 45
  - Others settings 47
  - Photo Locations 46
  - Using the volume key 45
  - Video settings 47
- Chrome 55
  - Adding a new tab 55
  - Bookmarking pages 55
  - Clearing the browser cache 56
- Clock 35
  - Alarm clock 36
  - Launching Clock 35
  - Stopwatch 37
  - Timer 37
  - World Clock 36
- Contacts 42
  - Adding an extension number to a contact number 43
  - Adding contacts 43
  - Contacts Settings 42
  - Customizing your contact's profile 43
  - Exporting contacts 44
  - Importing contacts 44
  - Marking your favorite contacts 43
  - Setting up your profile 42
  - Setting up your VIPs 44
    - Set up your VIP from the Contacts app

home screen 44

## D

- Date & time 34
  - Setting up 34
- Do It Later 58
  - Adding to-do tasks 58
  - Deleting to-do tasks 58
  - Prioritizing to-do tasks 58

## E

- Editing your Home screen 34
- Email 56
  - Adding email accounts 57
  - Setting up email accounts 56

## F

- File Manager 59
  - Accessing Cloud storage 59
  - Accessing the external storage device 59
  - Accessing the internal storage 59
- Fingerprint ID sensor 20
  - Setting up your fingerprint ID from Settings 21
  - Starting your ASUS phone for the first time 20

## G

Gmail 57

## H

- HDR Pro. *See also* Advanced camera features
- Home screen 28

## K

- Keeping your device up-to-date 41
  - Backup and reset 41
  - Storage 41
  - Updating your system 41

## L

- Lock Screen 24
  - Customizing 24
  - Fingerprint 27
  - Password 26
  - Pattern 26
  - Swipe 25

## M

- Mobile Hotspot and Tethering 65
  - Bluetooth Tethering 67

- USB Tethering 65
- Mobile network
- Mobile Hotspot 66

## P

- Photos 53
- Deleting files from the Photos 54
  - Editing images 54
  - Sharing files from the Photos 53
  - Viewing files from your social network or cloud storage 53
  - Viewing the photo location 53
  - Zooming in/out the thumbnails or images 54
- Power Saver 40
- Customizing Power Saver 40
  - Setting up Power Saver 40

## Q

- Quick access 27
- Quick settings 30
- Adding or removing buttons 31

## R

- Ringtone 35
- set up 35
  - Sound & Vibration 35

## S

- Securing 20
- Setting your ASUS Phone identity 40
- Storage 41
- System
- updating 41
- System notifications 31

## T

- Tango 60
- Using Tango 60
- Touchscreen 18
- launching apps or selecting items 18
  - moving or deleting items 18
  - moving through pages or screens 18
  - zooming in 19
  - zooming out 19

## V

- Voice Search 39

## W

- Wallpapers 33

- Applying wallpaper and background tint 33
- Weather 38
- Weather home screen 39

- Widgets 32
- Adding widgets 32
  - Removing widgets 32

- Wi-Fi 61
- Connecting to a Wi-Fi network 61
  - Disabling Wi-Fi 62
  - Enabling Wi-Fi 61

## Z

- Zen 8
- Charging 13
  - microSD card 9
    - Installing 9
    - Removing 10
  - nano SIM card 11
    - Installing 11
    - Removing 12
  - Parts and features 8