

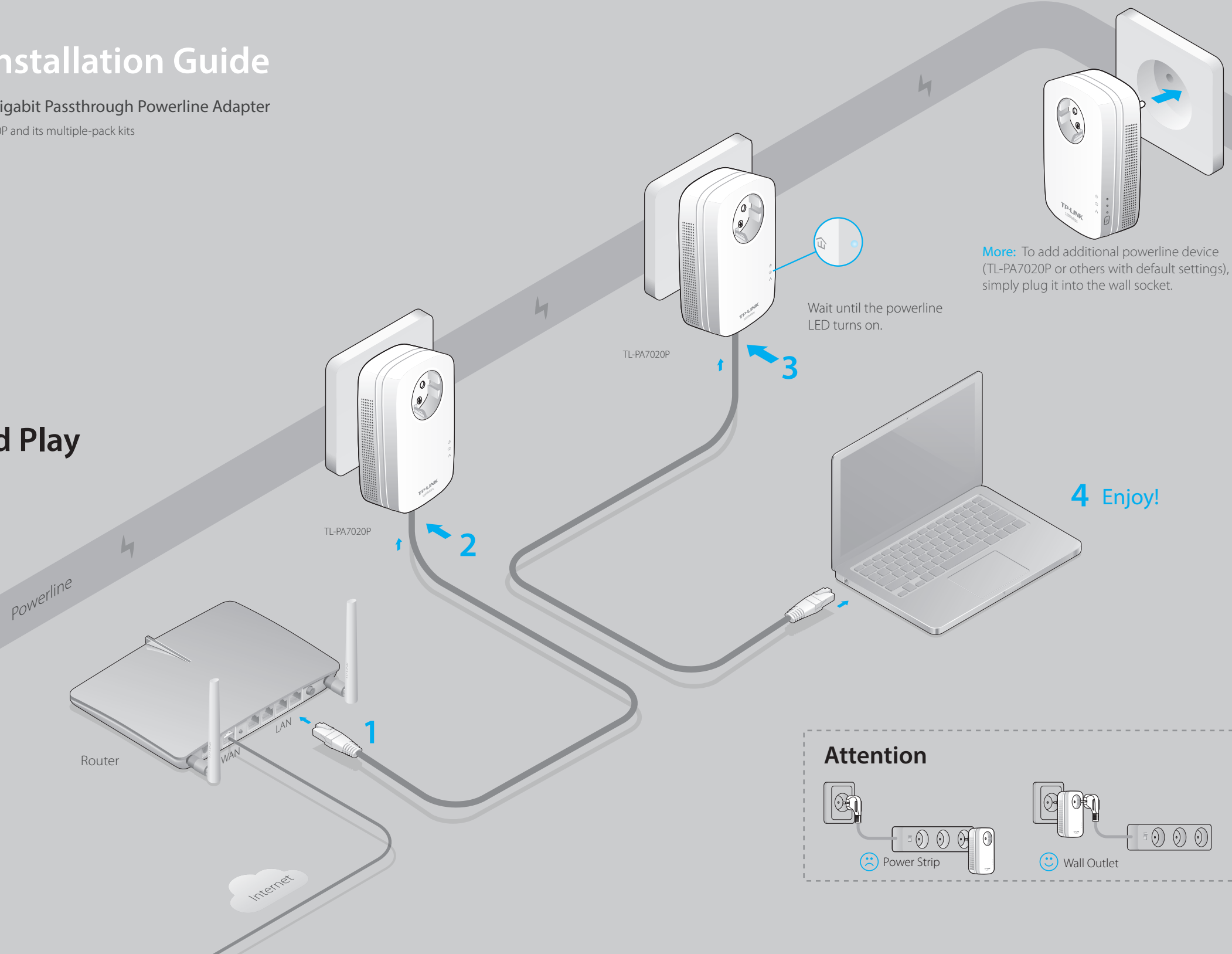
# Quick Installation Guide

## AV1000 2-port Gigabit Passthrough Powerline Adapter

Applicable to TL-PA7020P and its multiple-pack kits

7106505009 REV1.0.0

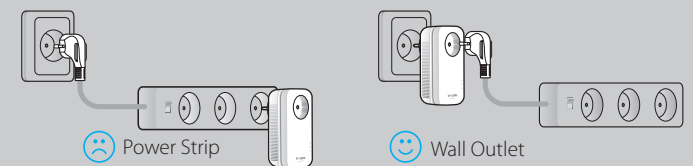
## Plug and Play



Wait until the powerline LED turns on.

**More:** To add additional powerline device (TL-PA7020P or others with default settings), simply plug it into the wall socket.

### Attention

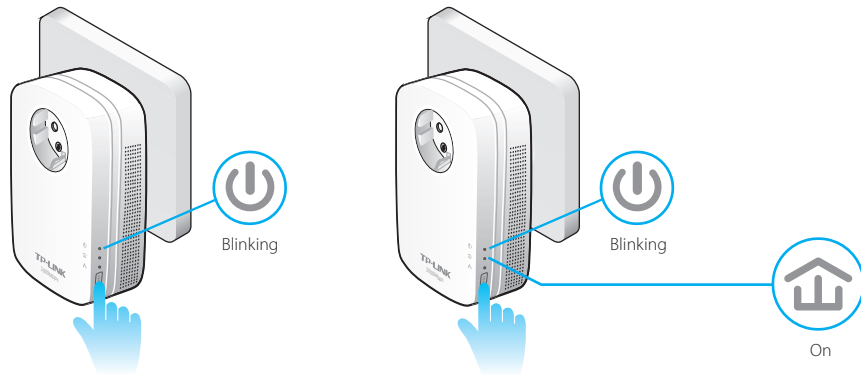


# Set Up a Secure Powerline Network by Pairing (Optional)

Pairing is used to create or join a secure powerline network.

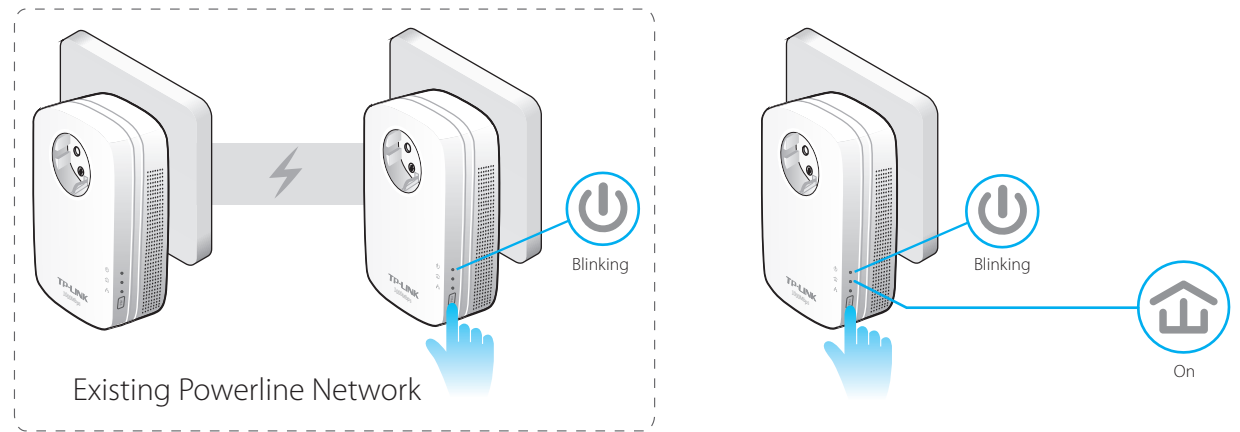
## To create a secure powerline network:

- 1 Press the Pair button on one device.
- 2 Press the Pair button on another device.
- 3 Done.



## To join an existing secure powerline network:

- 1 Press the Pair button of any powerline device in the existing powerline network.
- 2 Press the Pair button on the new device.
- 3 Done.



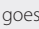
## LED and Item Legend

LED	STATUS	DESCRIPTION
Power	On/Off	The powerline adapter is on or off.
	Blinking	Blinking every second: Pairing is in process. Blinking every 15 seconds: Power-Saving Mode is on.*
Powerline	On	The powerline adapter is connected to a powerline network.
	Off	The powerline adapter is not connected to any powerline network or is in Power-Saving Mode.
Ethernet	On	At least one Ethernet port is connected.
	Off	No Ethernet port is connected.

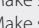
\* Five minutes after the device connected to the powerline adapter is turned off, the powerline adapter will automatically switch to Power-Saving Mode.

## FAQ (Frequently Asked Questions)

### Q1. How do I reset my powerline adapter?

A1. With the powerline adapter connected to the electrical outlet, press and hold the Pair button for more than 15 seconds until the Power LED  goes off momentarily and comes back on.

### Q2. What can I do if I do not have an Internet connection after I complete the setup?

- A1. Make sure the modem or router has an Internet connection. Connect a computer directly to the modem or router to check.  
 A2. Make sure the hardware connection is correct.  
 A3. Make sure the Powerline LEDs  light up on all your powerline devices. If they do not, reset or pair all your powerline devices.  
 A4. Make sure your computer's IP address is in the same segment as your router's.  
 A5. Make sure all powerline devices are on the same electrical circuit.

### Q3. What can I do if a successfully-paired powerline device does not work after it is moved to a new location?

- A1. Make sure all powerline devices are on the same electrical circuit.  
 A2. Try to pair them again according to "Set Up a Secure Powerline Network by Pairing".  
 A3. If they still do not work, check for possible interference, such as washers, air conditioners or other household appliances that may be too close to one of the powerline devices. Plug them into the integrated electrical sockets to remove some electrical noise.



<http://www.tp-link.com/en/support/faq>

Scan the QR code to access the Technical Support page.

More advanced configurations, such as firmware upgrade and QoS configuration, can be accessed through the Powerline Utility. You can install the Powerline Utility from the resource CD (for Windows only) or download it from the TP-LINK official website (for Windows and Mac OS X).

ITEM	DESCRIPTION
Pair Button	Press and hold for 1 second to set up or join a secure powerline network.
	Press and hold for 8 seconds to leave an existing powerline network.
	Press and hold for more than 15 seconds to reset the powerline adapter.
Integrated Electrical Socket	Used as an electrical outlet expansion for power strip or household appliances. It can remove some electrical noise that might affect powerline performance.